



[Go to Product page](#)

Datasheet for ABIN6264319

anti-PMS1 antibody (Internal Region)

2 Images

Overview

Quantity:	100 µL
Target:	PMS1
Binding Specificity:	Internal Region
Reactivity:	Human, Rat
Host:	Rabbit
Clonality:	Polyclonal
Conjugate:	This PMS1 antibody is un-conjugated
Application:	Western Blotting (WB), ELISA, Immunohistochemistry (IHC)

Product Details

Immunogen:	A synthesized peptide derived from human PMS1, corresponding to a region within the internal amino acids.
Isotype:	IgG
Specificity:	PMS1 Antibody detects endogenous levels of total PMS1.
Predicted Reactivity:	Pig,Dog
Purification:	The antiserum was purified by peptide affinity chromatography using SulfoLink™ Coupling Resin (Thermo Fisher Scientific).

Target Details

Target:	PMS1
---------	------

Target Details

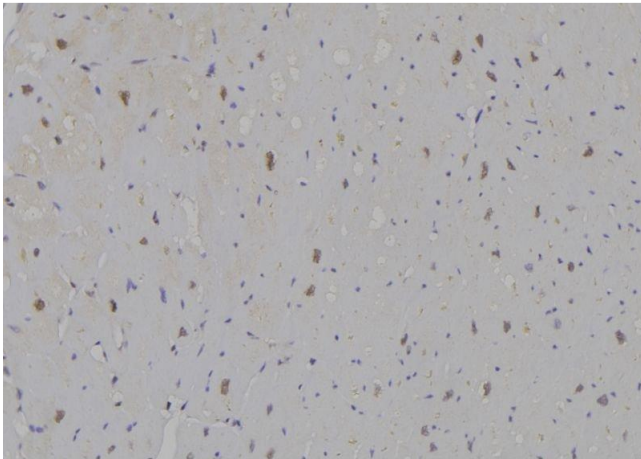
Alternative Name:	PMS1 (PMS1 Products)
Background:	Description: Probably involved in the repair of mismatches in DNA. Gene: PMS1
Molecular Weight:	106kDa
Gene ID:	5378
UniProt:	P54277

Application Details

Application Notes:	WB 1:500-1:2000, IHC 1:50-1:200, ELISA(peptide) 1:20000-1:40000
Restrictions:	For Research Use only

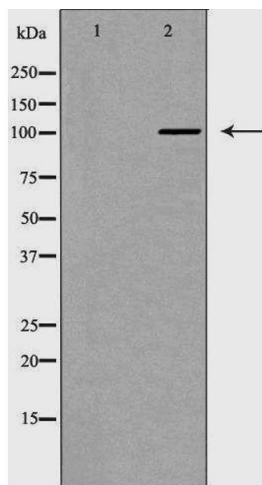
Handling

Format:	Liquid
Concentration:	1 mg/mL
Buffer:	Rabbit IgG in phosphate buffered saline , pH 7.4, 150 mM NaCl, 0.02 % sodium azide and 50 % glycerol.
Preservative:	Sodium azide
Precaution of Use:	This product contains Sodium azide: a POISONOUS AND HAZARDOUS SUBSTANCE which should be handled by trained staff only.
Storage:	-20 °C
Storage Comment:	Store at -20 °C. Stable for 12 months from date of receipt.
Expiry Date:	12 months



Immunohistochemistry

Image 1. ABIN6277165 at 1/100 staining Human heart tissue by IHC-P. The sample was formaldehyde fixed and a heat mediated antigen retrieval step in citrate buffer was performed. The sample was then blocked and incubated with the antibody for 1.5 hours at 22°C. An HRP conjugated goat anti-rabbit antibody was used as the secondary



Western Blotting

Image 2. Western blot analysis of HeLa whole cell lysates, using PMS1 Antibody. The lane on the left is treated with the antigen-specific peptide.