

Datasheet for ABIN6264331
anti-POLA2 antibody (Internal Region)

2 Images

[Go to Product page](#)

Overview

| | |
|----------------------|--|
| Quantity: | 100 µL |
| Target: | POLA2 |
| Binding Specificity: | Internal Region |
| Reactivity: | Human |
| Host: | Rabbit |
| Clonality: | Polyclonal |
| Conjugate: | This POLA2 antibody is un-conjugated |
| Application: | Western Blotting (WB), ELISA, Immunohistochemistry (IHC) |

Product Details

| | |
|-----------------------|---|
| Immunogen: | A synthesized peptide derived from human POLA2, corresponding to a region within the internal amino acids. |
| Isotype: | IgG |
| Specificity: | POLA2 Antibody detects endogenous levels of total POLA2. |
| Predicted Reactivity: | Pig,Zebrafish,Bovine,Horse,Sheep,Rabbit,Dog,Xenopus |
| Purification: | The antiserum was purified by peptide affinity chromatography using SulfoLink™ Coupling Resin (Thermo Fisher Scientific). |

Target Details

| | |
|---------|-------|
| Target: | POLA2 |
|---------|-------|

Target Details

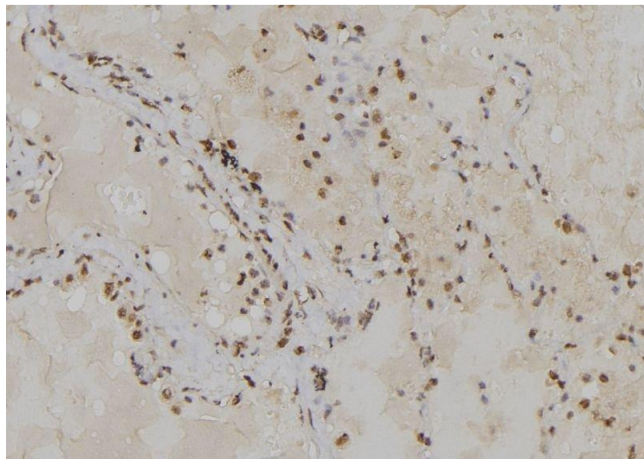
| | |
|-------------------|--|
| Alternative Name: | POLA2 (POLA2 Products) |
| Background: | Description: May play an essential role at the early stage of chromosomal DNA replication by coupling the polymerase alpha/primase complex to the cellular replication machinery. Gene: POLA2 |
| Molecular Weight: | 66 kDa |
| Gene ID: | 23649 |
| UniProt: | Q14181 |
| Pathways: | Telomere Maintenance , Mitotic G1-G1/S Phases , DNA Replication , Protein targeting to Nucleus , Synthesis of DNA , SARS-CoV-2 Protein Interactome |

Application Details

| | |
|--------------------|---|
| Application Notes: | WB 1:1000-3000, IHC 1:200, ELISA(peptide) 1:20000-1:40000 |
| Restrictions: | For Research Use only |

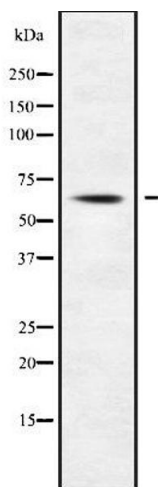
Handling

| | |
|--------------------|--|
| Format: | Liquid |
| Concentration: | 1 mg/mL |
| Buffer: | Rabbit IgG in phosphate buffered saline , pH 7.4, 150 mM NaCl, 0.02 % sodium azide and 50 % glycerol. |
| Preservative: | Sodium azide |
| Precaution of Use: | This product contains Sodium azide: a POISONOUS AND HAZARDOUS SUBSTANCE which should be handled by trained staff only. |
| Storage: | -20 °C |
| Storage Comment: | Store at -20 °C. Stable for 12 months from date of receipt. |
| Expiry Date: | 12 months |



Immunohistochemistry

Image 1. ABIN6279359 at 1/100 staining Human lung tissue by IHC-P. The sample was formaldehyde fixed and a heat mediated antigen retrieval step in citrate buffer was performed. The sample was then blocked and incubated with the antibody for 1.5 hours at 22°C. An HRP conjugated goat anti-rabbit antibody was used as the secondary



Western Blotting

Image 2. Western blot analysis of POLA2 using HuvEc whole cell lysates