

## Datasheet for ABIN6264332 **anti-POLB antibody (C-Term)**

### 4 Images



[Go to Product page](#)

### Overview

|                      |  |
|----------------------|--|
| Quantity:            | 100 µL   |
| Target:              | POLB   |
| Binding Specificity: | C-Term   |
| Reactivity:          | Human, Mouse, Rat  |
| Host:                | Rabbit   |
| Clonality:           | Polyclonal   |
| Conjugate:           | This POLB antibody is un-conjugated  |
| Application:         | Western Blotting (WB), Immunohistochemistry (IHC), ELISA, Immunofluorescence (IF), Immunocytochemistry (ICC) |

### Product Details

|                       |   |
|-----------------------|---|
| Immunogen:            | A synthesized peptide derived from human DNA Polymerase beta, corresponding to a region within C-terminal amino acids.    |
| Isotype:              | IgG   |
| Specificity:          | DNA Polymerase beta Antibody detects endogenous levels of total DNA Polymerase beta.                                      |
| Predicted Reactivity: | Pig,Zebrafish,Bovine,Sheep,Rabbit,Dog,Chicken,Xenopus   |
| Purification:         | The antiserum was purified by peptide affinity chromatography using SulfoLink™ Coupling Resin (Thermo Fisher Scientific). |

### Target Details

|         |      |
|---------|------|
| Target: | POLB |
|---------|------|

## Target Details

---

|                   |   |
|-------------------|---|
| Alternative Name: | <a href="#">POLB (POLB Products)</a>  |
| Background:       | <p>Description: Repair polymerase that plays a key role in base-excision repair. Has 5'-deoxyribose-5-phosphate lyase (dRP lyase) activity that removes the 5' sugar phosphate and also acts as a DNA polymerase that adds one nucleotide to the 3' end of the arising single-nucleotide gap. Conducts 'gap-filling' DNA synthesis in a stepwise distributive fashion rather than in a processive fashion as for other DNA polymerases.</p> <p>Gene: POLB</p> |
| Molecular Weight: | 38kDa   |
| Gene ID:          | 5423  |
| UniProt:          | <a href="#">P06746</a>  |
| Pathways:         | <a href="#">DNA Damage Repair</a>   |

## Application Details

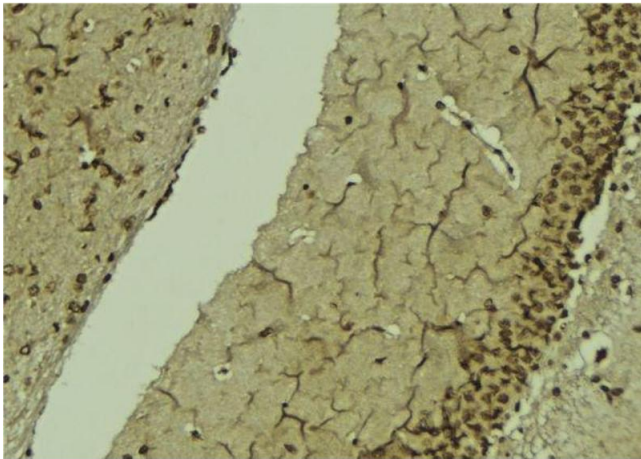
---

|                    |   |
|--------------------|---|
| Application Notes: | WB 1:500-1:2000, IHC 1:50-1:200, IF/ICC 1:100-1:500, ELISA(peptide) 1:20000-1:40000 |
| Restrictions:      | For Research Use only   |

## Handling

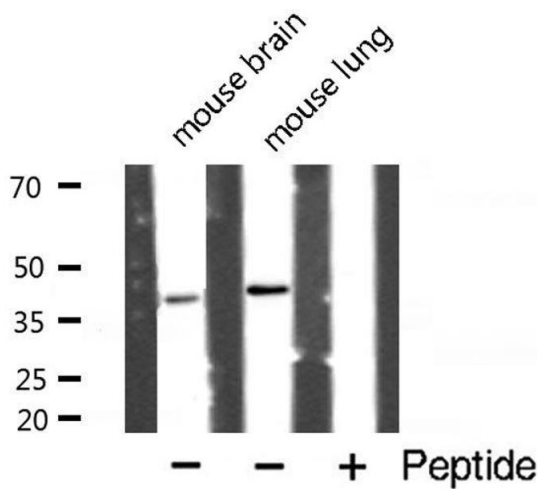
---

|                    |  |
|--------------------|--|
| Format:            | Liquid   |
| Concentration:     | 1 mg/mL  |
| Buffer:            | Rabbit IgG in phosphate buffered saline , pH 7.4, 150 mM NaCl, 0.02 % sodium azide and 50 % glycerol.                  |
| Preservative:      | Sodium azide   |
| Precaution of Use: | This product contains Sodium azide: a POISONOUS AND HAZARDOUS SUBSTANCE which should be handled by trained staff only. |
| Storage:           | -20 °C   |
| Storage Comment:   | Store at -20 °C. Stable for 12 months from date of receipt.  |
| Expiry Date:       | 12 months  |



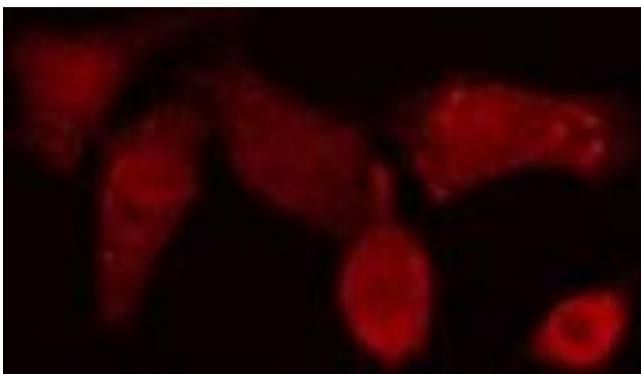
### Immunohistochemistry

**Image 1.** ABIN6276815 at 1/100 staining Mouse brain tissue by IHC-P. The sample was formaldehyde fixed and a heat mediated antigen retrieval step in citrate buffer was performed. The sample was then blocked and incubated with the antibody for 1.5 hours at 22°C. An HRP conjugated goat anti-rabbit antibody was used as the secondary



### Western Blotting

**Image 2.** Western blot analysis of POLB expression in various lysates



### Immunofluorescence (fixed cells)

**Image 3.** ABIN6276815 staining NIH-3T3 cells by IF/ICC. The sample were fixed with PFA and permeabilized in 0.1% Triton X-100, then blocked in 10% serum for 45 minutes at 25°C. The primary antibody was diluted at 1/200 and incubated with the sample for 1 hour at 37°C. An Alexa Fluor 594 conjugated goat anti-rabbit IgG (H+L) antibody (Cat.# S0006), diluted at 1/600, was used as secondary antibody

Please check the [product details page](#) for more images. Overall 4 images are available for ABIN6264332.