

Datasheet for ABIN6264334  
**anti-POLD4 antibody (Internal Region)**[Go to Product page](#)

## 2 Images

## Overview

Quantity:	100 µL
Target:	POLD4
Binding Specificity:	Internal Region
Reactivity:	Human
Host:	Rabbit
Clonality:	Polyclonal
Conjugate:	This POLD4 antibody is un-conjugated
Application:	Western Blotting (WB), ELISA, Immunohistochemistry (IHC)

## Product Details

Immunogen:	A synthesized peptide derived from human POLD4, corresponding to a region within the internal amino acids.
Isotype:	IgG
Specificity:	POLD4 Antibody detects endogenous levels of total POLD4.
Predicted Reactivity:	Pig,Bovine,Horse,Sheep,Rabbit,Dog
Purification:	The antiserum was purified by peptide affinity chromatography using SulfoLink™ Coupling Resin (Thermo Fisher Scientific).

## Target Details

Target:	POLD4
---------	-------

## Target Details

Alternative Name:	POLD4 ( <a href="#">POLD4 Products</a> )
Background:	<p>Description: As a component of the tetrameric DNA polymerase delta complex (Pol-delta4), plays a role in high fidelity genome replication and repair. Within this complex, increases the rate of DNA synthesis and decreases fidelity by regulating POLD1 polymerase and proofreading 3' to 5' exonuclease activity (PubMed:16510448, PubMed:19074196, PubMed:20334433). Pol-delta4 participates in Okazaki fragment processing, through both the short flap pathway, as well as a nick translation system (PubMed:24035200). Under conditions of DNA replication stress, required for the repair of broken replication forks through break-induced replication (BIR), a mechanism that may induce segmental genomic duplications of up to 200 kb (PubMed:24310611). Involved in Pol-delta4 translesion synthesis (TLS) of templates carrying O6-methylguanine or abasic sites (PubMed:19074196). Its degradation in response to DNA damage is required for the inhibition of fork progression and cell survival (PubMed:24022480).</p> <p>Gene: POLD4</p>
Molecular Weight:	12 kDa
Gene ID:	57804
UniProt:	<a href="#">Q9HCU8</a>
Pathways:	<a href="#">Telomere Maintenance</a> , <a href="#">DNA Damage Repair</a> , <a href="#">DNA Replication</a> , <a href="#">Synthesis of DNA</a>

## Application Details

Application Notes:	WB 1:1000-3000, IHC 1:200, ELISA(peptide) 1:20000-1:40000
Restrictions:	For Research Use only

## Handling

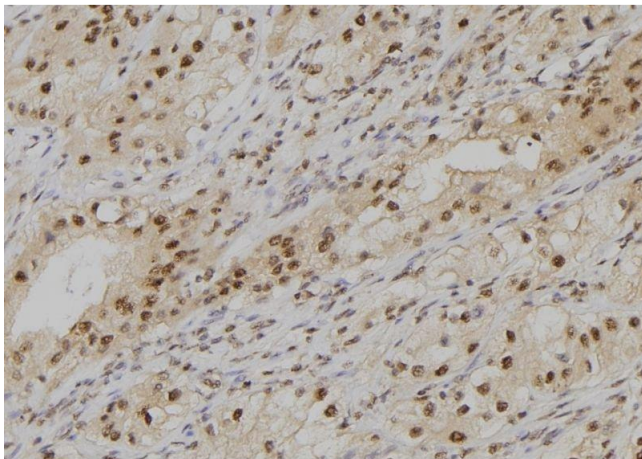
Format:	Liquid
Concentration:	1 mg/mL
Buffer:	Rabbit IgG in phosphate buffered saline , pH 7.4, 150 mM NaCl, 0.02 % sodium azide and 50 % glycerol.
Preservative:	Sodium azide
Precaution of Use:	This product contains Sodium azide: a POISONOUS AND HAZARDOUS SUBSTANCE which should be handled by trained staff only.
Storage:	-20 °C

## Handling

Storage Comment: Store at -20 °C. Stable for 12 months from date of receipt.

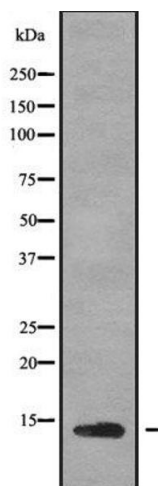
Expiry Date: 12 months

## Images



### Immunohistochemistry

**Image 1.** ABIN6279360 at 1/100 staining Human kidney tissue by IHC-P. The sample was formaldehyde fixed and a heat mediated antigen retrieval step in citrate buffer was performed. The sample was then blocked and incubated with the antibody for 1.5 hours at 22°C. An HRP conjugated goat anti-rabbit antibody was used as the secondary



### Western Blotting

**Image 2.** Western blot analysis of POLD4 using K562 whole cell lysates