



[Go to Product page](#)

Datasheet for ABIN6264335  
**anti-POLE2 antibody (C-Term)**

1 Image

Overview

|                      |                                      |
|----------------------|--------------------------------------|
| Quantity:            | 100 µL                               |
| Target:              | POLE2                                |
| Binding Specificity: | C-Term                               |
| Reactivity:          | Human                                |
| Host:                | Rabbit                               |
| Clonality:           | Polyclonal                           |
| Conjugate:           | This POLE2 antibody is un-conjugated |
| Application:         | Western Blotting (WB), ELISA         |

Product Details

|                       |   |
|-----------------------|---|
| Immunogen:            | A synthesized peptide derived from human POLE2, corresponding to a region within C-terminal amino acids.                  |
| Isotype:              | IgG   |
| Specificity:          | POLE2 Antibody detects endogenous levels of total POLE2.  |
| Predicted Reactivity: | Pig,Zebrafish,Bovine,Horse,Sheep,Rabbit,Chicken,Xenopus   |
| Purification:         | The antiserum was purified by peptide affinity chromatography using SulfoLink™ Coupling Resin (Thermo Fisher Scientific). |

Target Details

|         |       |
|---------|-------|
| Target: | POLE2 |
|---------|-------|

## Target Details

---

|                   |   |
|-------------------|---|
| Alternative Name: | POLE2 ( <a href="#">POLE2 Products</a> )  |
| Background:       | Description: Participates in DNA repair and in chromosomal DNA replication.<br>Gene: POLE2  |
| Molecular Weight: | 60 kDa  |
| Gene ID:          | 5427  |
| UniProt:          | <a href="#">P56282</a>  |
| Pathways:         | <a href="#">Telomere Maintenance</a> , <a href="#">DNA Damage Repair</a> , <a href="#">Mitotic G1-G1/S Phases</a> , <a href="#">DNA Replication</a> ,<br><a href="#">Synthesis of DNA</a> |

## Application Details

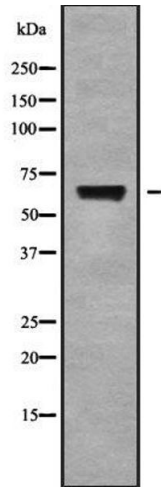
---

|                    |  |
|--------------------|--|
| Application Notes: | WB 1:1000-3000, ELISA(peptide) 1:20000-1:40000 |
| Restrictions:      | For Research Use only                          |

## Handling

---

|                    |  |
|--------------------|--|
| Format:            | Liquid   |
| Concentration:     | 1 mg/mL  |
| Buffer:            | Rabbit IgG in phosphate buffered saline , pH 7.4, 150 mM NaCl, 0.02 % sodium azide and 50 % glycerol.                  |
| Preservative:      | Sodium azide   |
| Precaution of Use: | This product contains Sodium azide: a POISONOUS AND HAZARDOUS SUBSTANCE which should be handled by trained staff only. |
| Storage:           | -20 °C   |
| Storage Comment:   | Store at -20 °C. Stable for 12 months from date of receipt.  |
| Expiry Date:       | 12 months  |



### Western Blotting

**Image 1.** Western blot analysis of POLE2 using LOVO whole cell lysates