

Datasheet for ABIN6264352

anti-POM121 antibody**2** Images[Go to Product page](#)

Overview

Quantity:	100 µL
Target:	POM121
Reactivity:	Human, Rat, Mouse
Host:	Rabbit
Clonality:	Polyclonal
Conjugate:	This POM121 antibody is un-conjugated
Application:	Western Blotting (WB), ELISA, Immunofluorescence (IF), Immunocytochemistry (ICC)

Product Details

Immunogen:	A synthesized peptide derived from human POM121
Isotype:	IgG
Specificity:	POM121 Antibody detects endogenous levels of total POM121
Cross-Reactivity:	Human, Mouse (Murine), Rat (Rattus)
Purification:	The antiserum was purified by peptide affinity chromatography using SulfoLink™ Coupling Resin (Thermo Fisher Scientific).

Target Details

Target:	POM121
Alternative Name:	POM121 (POM121 Products)
Background:	Description: Essential component of the nuclear pore complex (NPC). The repeat-containing

Target Details

domain may be involved in anchoring components of the pore complex to the pore membrane.
When overexpressed in cells induces the formation of cytoplasmic annulate lamellae (AL).
Gene: POM121

Molecular Weight: 125 kDa

Gene ID: 9883

UniProt: [Q96HA1](#), [A6NF01](#), [A8CG34](#)

Application Details

Application Notes: WB 1:1000-3000, IF/ICC 1:100-1:500

Restrictions: For Research Use only

Handling

Format: Liquid

Concentration: 1 mg/mL

Buffer: Rabbit IgG in phosphate buffered saline , pH 7.4, 150 mM NaCl, 0.02 % sodium azide and 50 % glycerol.

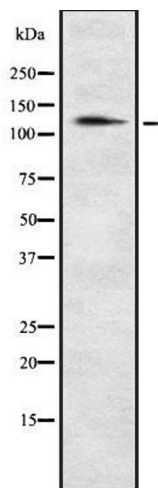
Preservative: Sodium azide

Precaution of Use: This product contains Sodium azide: a POISONOUS AND HAZARDOUS SUBSTANCE which should be handled by trained staff only.

Storage: -20 °C

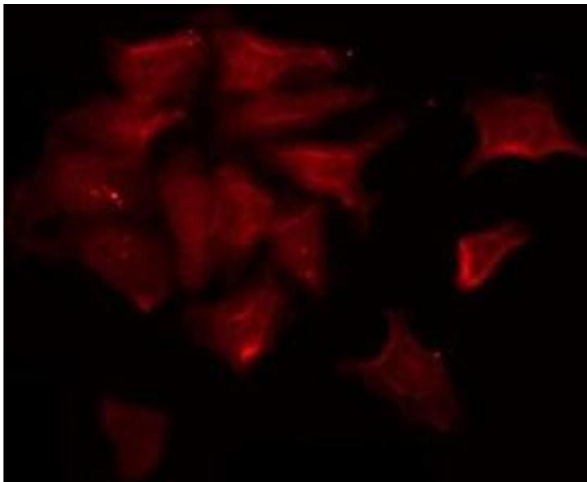
Storage Comment: Store at -20 °C.Stable for 12 months from date of receipt

Expiry Date: 12 months



Western Blotting

Image 1. Western blot analysis of POM121 using NIH-3T3 whole cell lysates



Immunofluorescence (fixed cells)

Image 2. ABIN6278622 staining K562 by IF/ICC. The sample were fixed with PFA and permeabilized in 0.1% Triton X-100, then blocked in 10% serum for 45 minutes at 25°C. The primary antibody was diluted at 1/200 and incubated with the sample for 1 hour at 37°C. An Alexa Fluor 594 conjugated goat anti-rabbit IgG (H+L) Ab, diluted at 1/600, was used as the secondary antibody