

Datasheet for ABIN6264362  
**anti-POU3F3 antibody (N-Term)**[Go to Product page](#)

## 2 Images

## Overview

Quantity:	100 µL
Target:	POU3F3
Binding Specificity:	N-Term
Reactivity:	Human, Mouse, Rat
Host:	Rabbit
Clonality:	Polyclonal
Conjugate:	This POU3F3 antibody is un-conjugated
Application:	Western Blotting (WB), ELISA, Immunohistochemistry (IHC)

## Product Details

Immunogen:	A synthesized peptide derived from human POU3F3, corresponding to a region within N-terminal amino acids.
Isotype:	IgG
Specificity:	POU3F3 Antibody detects endogenous levels of total POU3F3.
Predicted Reactivity:	Chicken
Purification:	The antiserum was purified by peptide affinity chromatography using SulfoLink™ Coupling Resin (Thermo Fisher Scientific).

## Target Details

Target:	POU3F3
---------	--------

## Target Details

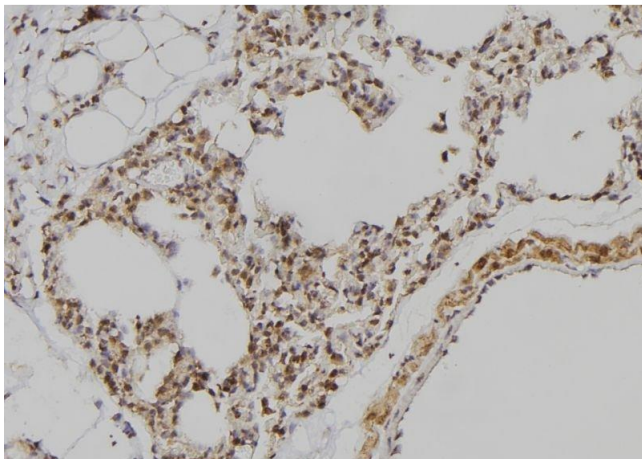
Alternative Name:	POU3F3 ( <a href="#">POU3F3 Products</a> )
Background:	Description: Transcription factor that acts synergistically with SOX11 and SOX4. Plays a role in neuronal development. Is implicated in an enhancer activity at the embryonic met-mesencephalic junction, the enhancer element contains the octamer motif (5'-ATTTGCAT-3') (By similarity). Gene: POU3F3
Molecular Weight:	50 kDa
Gene ID:	5455
UniProt:	<a href="#">P20264</a>

## Application Details

Application Notes:	WB 1:1000-3000, IHC 1:200, ELISA(peptide) 1:20000-1:40000
Restrictions:	For Research Use only

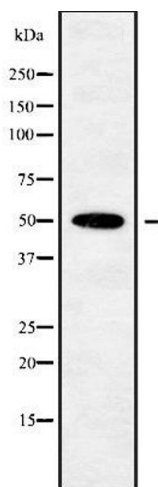
## Handling

Format:	Liquid
Concentration:	1 mg/mL
Buffer:	Rabbit IgG in phosphate buffered saline , pH 7.4, 150 mM NaCl, 0.02 % sodium azide and 50 % glycerol.
Preservative:	Sodium azide
Precaution of Use:	This product contains Sodium azide: a POISONOUS AND HAZARDOUS SUBSTANCE which should be handled by trained staff only.
Storage:	-20 °C
Storage Comment:	Store at -20 °C. Stable for 12 months from date of receipt.
Expiry Date:	12 months



#### Immunohistochemistry

**Image 1.** ABIN6279002 at 1/100 staining Rat lung tissue by IHC-P. The sample was formaldehyde fixed and a heat mediated antigen retrieval step in citrate buffer was performed. The sample was then blocked and incubated with the antibody for 1.5 hours at 22°C. An HRP conjugated goat anti-rabbit antibody was used as the secondary



#### Western Blotting

**Image 2.** Western blot analysis of POU3F3 using K562 whole cell lysates