

Datasheet for ABIN6264375  
**anti-CXCL7 antibody (Internal Region)**[Go to Product page](#)

## 2 Images

## Overview

|                      |  |
|----------------------|--|
| Quantity:            | 100 µL   |
| Target:              | CXCL7 (PPBP)   |
| Binding Specificity: | Internal Region  |
| Reactivity:          | Human, Mouse, Rat  |
| Host:                | Rabbit   |
| Clonality:           | Polyclonal   |
| Conjugate:           | This CXCL7 antibody is un-conjugated   |
| Application:         | Western Blotting (WB), ELISA, Immunohistochemistry (IHC), Immunocytochemistry (ICC), Immunofluorescence (IF) |

## Product Details

|               |   |
|---------------|---|
| Immunogen:    | A synthesized peptide derived from human CXCL7/PBP, corresponding to a region within the internal amino acids.            |
| Isotype:      | IgG   |
| Specificity:  | CXCL7/PBP Antibody detects endogenous levels of total CXCL7/PBP.  |
| Purification: | The antiserum was purified by peptide affinity chromatography using SulfoLink™ Coupling Resin (Thermo Fisher Scientific). |

## Target Details

|                   |  |
|-------------------|--|
| Target:           | CXCL7 (PPBP)                           |
| Alternative Name: | PPBP ( <a href="#">PPBP Products</a> ) |

## Target Details

|             |   |
|-------------|---|
| Background: | <p>Description: LA-PF4 stimulates DNA synthesis, mitosis, glycolysis, intracellular cAMP accumulation, prostaglandin E2 secretion, and synthesis of hyaluronic acid and sulfated glycosaminoglycan. It also stimulates the formation and secretion of plasminogen activator by human synovial cells. NAP-2 is a ligand for CXCR1 and CXCR2, and NAP-2, NAP-2(73), NAP-2(74), NAP-2(1-66), and most potent NAP-2(1-63) are chemoattractants and activators for neutrophils. TC-1 and TC-2 are antibacterial proteins, in vitro released from activated platelet alpha-granules. CTAP-III(1-81) is more potent than CTAP-III desensitize chemokine-induced neutrophil activation.</p> <p>Gene: PPBP</p> |
|-------------|---|

|                   |       |
|-------------------|-------|
| Molecular Weight: | 14kDa |
|-------------------|-------|

|          |      |
|----------|------|
| Gene ID: | 5473 |
|----------|------|

|          |                        |
|----------|------------------------|
| UniProt: | <a href="#">P02775</a> |
|----------|------------------------|

## Application Details

|                    |   |
|--------------------|---|
| Application Notes: | WB 1:500-1:2000, IHC 1:50-1:200, IF/ICC 1:100-1:500, ELISA(peptide) 1:20000-1:40000 |
|--------------------|---|

|               |                       |
|---------------|-----------------------|
| Restrictions: | For Research Use only |
|---------------|-----------------------|

## Handling

|         |        |
|---------|--------|
| Format: | Liquid |
|---------|--------|

|                |         |
|----------------|---------|
| Concentration: | 1 mg/mL |
|----------------|---------|

|         |   |
|---------|---|
| Buffer: | Rabbit IgG in phosphate buffered saline , pH 7.4, 150 mM NaCl, 0.02 % sodium azide and 50 % glycerol. |
|---------|---|

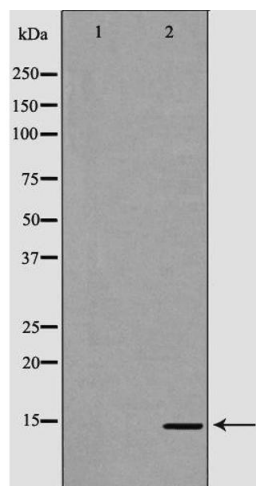
|               |              |
|---------------|--------------|
| Preservative: | Sodium azide |
|---------------|--------------|

|                    |  |
|--------------------|--|
| Precaution of Use: | This product contains Sodium azide: a POISONOUS AND HAZARDOUS SUBSTANCE which should be handled by trained staff only. |
|--------------------|--|

|          |        |
|----------|--------|
| Storage: | -20 °C |
|----------|--------|

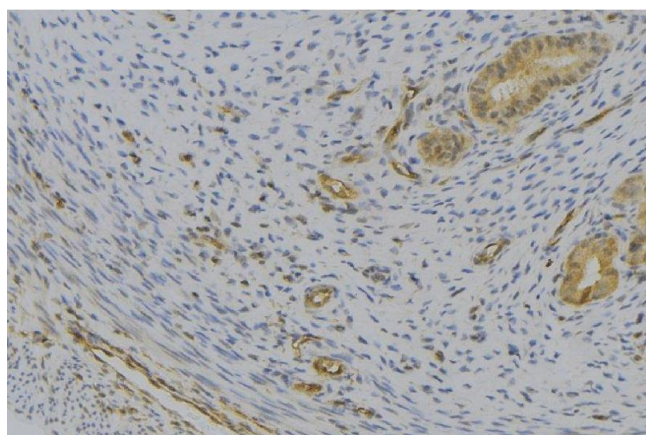
|                  |   |
|------------------|---|
| Storage Comment: | Store at -20 °C. Stable for 12 months from date of receipt. |
|------------------|---|

|              |           |
|--------------|-----------|
| Expiry Date: | 12 months |
|--------------|-----------|



### Western Blotting

**Image 1.** Western blot analysis of extracts of mouse liver, using PPBP antibody. The lane on the left is treated with the antigen-specific peptide.



### Immunohistochemistry

**Image 2.** ABIN6276958 at 1/100 staining Human uterus tissue by IHC-P. The sample was formaldehyde fixed and a heat mediated antigen retrieval step in citrate buffer was performed. The sample was then blocked and incubated with the antibody for 1.5 hours at 22°C. An HRP conjugated goat anti-rabbit antibody was used as the secondary