



[Go to Product page](#)

Datasheet for ABIN6264385

anti-PPP1R1C antibody (Internal Region)

2 Images

Overview

Quantity:	100 µL
Target:	PPP1R1C
Binding Specificity:	Internal Region
Reactivity:	Mouse, Human, Rat
Host:	Rabbit
Clonality:	Polyclonal
Conjugate:	This PPP1R1C antibody is un-conjugated
Application:	Western Blotting (WB), ELISA, Immunohistochemistry (IHC)

Product Details

Immunogen:	A synthesized peptide derived from human PPP1R1C, corresponding to a region within the internal amino acids.
Isotype:	IgG
Specificity:	PPP1R1C Antibody detects endogenous levels of total PPP1R1C.
Predicted Reactivity:	Pig,Zebrafish,Bovine,Sheep,Rabbit,Dog,Chicken,Xenopus
Purification:	The antiserum was purified by peptide affinity chromatography using SulfoLink™ Coupling Resin (Thermo Fisher Scientific).

Target Details

Target:	PPP1R1C
---------	---------

Target Details

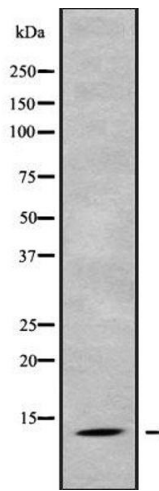
Alternative Name:	PPP1R1C (PPP1R1C Products)
Background:	Description: Inhibitor of protein-phosphatase 1. Promotes cell growth and cell cycle progress at the G1/S transition. May increase cell susceptibility to TNF-induced apoptosis. Gene: PPP1R1C
Molecular Weight:	12 kDa
Gene ID:	151242
UniProt:	Q8WVI7

Application Details

Application Notes:	WB 1:1000-3000, IHC 1:50-1:200, ELISA(peptide) 1:20000-1:40000
Restrictions:	For Research Use only

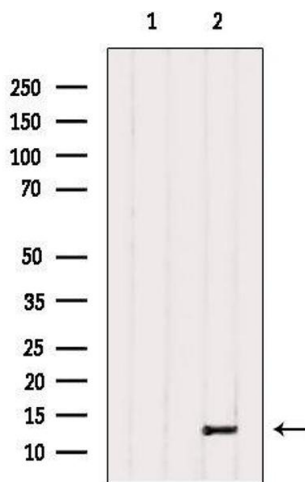
Handling

Format:	Liquid
Concentration:	1 mg/mL
Buffer:	Rabbit IgG in phosphate buffered saline , pH 7.4, 150 mM NaCl, 0.02 % sodium azide and 50 % glycerol.
Preservative:	Sodium azide
Precaution of Use:	This product contains Sodium azide: a POISONOUS AND HAZARDOUS SUBSTANCE which should be handled by trained staff only.
Storage:	-20 °C
Storage Comment:	Store at -20 °C. Stable for 12 months from date of receipt.
Expiry Date:	12 months



Western Blotting

Image 1. Western blot analysis of PPP1R1C using HeLa whole cell lysates



Western Blotting

Image 2. Western blot analysis of extracts from HeLa, using PPP1R1C Antibody. The lane on the left was treated with blocking peptide.