



[Go to Product page](#)

Datasheet for ABIN6264387
anti-PPP1R2 antibody (N-Term)

1 Image

Overview

Quantity:	100 µL
Target:	PPP1R2
Binding Specificity:	N-Term
Reactivity:	Human, Mouse, Rat
Host:	Rabbit
Clonality:	Polyclonal
Conjugate:	This PPP1R2 antibody is un-conjugated
Application:	ELISA, Western Blotting (WB), Immunohistochemistry (IHC)

Product Details

Immunogen:	A synthesized peptide derived from human PPP1R2, corresponding to a region within N-terminal amino acids.
Isotype:	IgG
Specificity:	PPP1R2 Antibody detects endogenous levels of total PPP1R2.
Predicted Reactivity:	Pig,Zebrafish,Bovine,Sheep,Rabbit,Dog,Xenopus
Purification:	The antiserum was purified by peptide affinity chromatography using SulfoLink™ Coupling Resin (Thermo Fisher Scientific).

Target Details

Target:	PPP1R2
---------	--------

Target Details

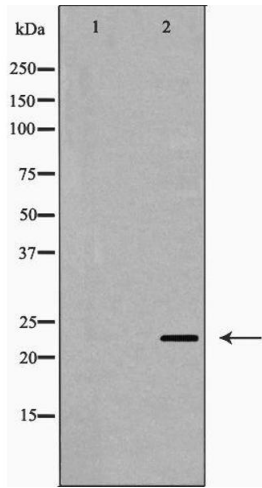
Alternative Name:	PPP1R2 (PPP1R2 Products)
Background:	Description: Inhibitor of protein-phosphatase 1. Gene: PPP1R2
Molecular Weight:	23 kDa
Gene ID:	5504
UniProt:	P41236
Pathways:	PI3K-Akt Signaling , Cellular Glucan Metabolic Process

Application Details

Application Notes:	WB 1:500-1:2000, IHC 1:50-1:200, ELISA(peptide) 1:20000-1:40000
Restrictions:	For Research Use only

Handling

Format:	Liquid
Concentration:	1 mg/mL
Buffer:	Rabbit IgG in phosphate buffered saline , pH 7.4, 150 mM NaCl, 0.02 % sodium azide and 50 % glycerol.
Preservative:	Sodium azide
Precaution of Use:	This product contains Sodium azide: a POISONOUS AND HAZARDOUS SUBSTANCE which should be handled by trained staff only.
Storage:	-20 °C
Storage Comment:	Store at -20 °C. Stable for 12 months from date of receipt.
Expiry Date:	12 months



Western Blotting

Image 1. Western blot analysis of PPP1R2 expression in Jurkat cells. The lane on the left is treated with the antigen-specific peptide.