



[Go to Product page](#)

Datasheet for ABIN6264389

## anti-PPP1R3D antibody (Internal Region)

### 2 Images

#### Overview

Quantity:	100 µL
Target:	PPP1R3D
Binding Specificity:	Internal Region
Reactivity:	Human, Mouse, Rat
Host:	Rabbit
Clonality:	Polyclonal
Conjugate:	This PPP1R3D antibody is un-conjugated
Application:	Western Blotting (WB), ELISA, Immunocytochemistry (ICC), Immunofluorescence (IF), Immunohistochemistry (IHC)

#### Product Details

Immunogen:	A synthesized peptide derived from human PPP1R3D, corresponding to a region within the internal amino acids.
Isotype:	IgG
Specificity:	PPP1R3D Antibody detects endogenous levels of total PPP1R3D.
Predicted Reactivity:	Bovine, Sheep, Dog, Chicken
Purification:	The antiserum was purified by peptide affinity chromatography using SulfoLink™ Coupling Resin (Thermo Fisher Scientific).

#### Target Details

Target:	PPP1R3D
---------	---------

## Target Details

---

Alternative Name:	PPP1R3D ( <a href="#">PPP1R3D Products</a> )
Background:	Description: Seems to act as a glycogen-targeting subunit for PP1. PP1 is essential for cell division, and participates in the regulation of glycogen metabolism, muscle contractility and protein synthesis. Gene: PPP1R3D
Molecular Weight:	33 kDa
Gene ID:	5509
UniProt:	<a href="#">O95685</a>

## Application Details

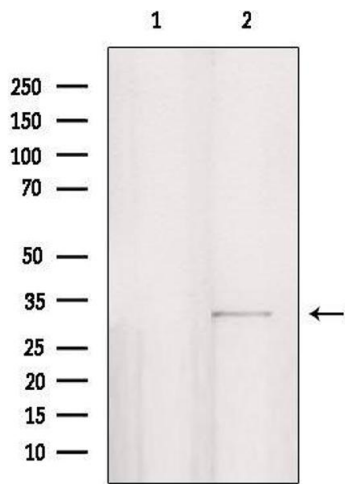
---

Application Notes:	WB 1:1000-3000, IF/ICC 1:100-1:500, IHC 1:50-1:200, ELISA(peptide) 1:20000-1:40000
Restrictions:	For Research Use only

## Handling

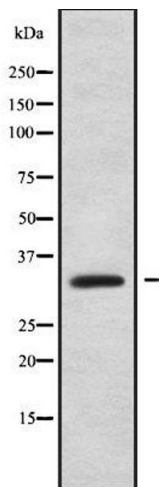
---

Format:	Liquid
Concentration:	1 mg/mL
Buffer:	Rabbit IgG in phosphate buffered saline , pH 7.4, 150 mM NaCl, 0.02 % sodium azide and 50 % glycerol.
Preservative:	Sodium azide
Precaution of Use:	This product contains Sodium azide: a POISONOUS AND HAZARDOUS SUBSTANCE which should be handled by trained staff only.
Storage:	-20 °C
Storage Comment:	Store at -20 °C. Stable for 12 months from date of receipt.
Expiry Date:	12 months



### Western Blotting

**Image 1.** Western blot analysis of extracts from HepG2, using PPP1R3D Antibody. Lane 1 was treated with the blocking peptide.



### Western Blotting

**Image 2.** Western blot analysis of PPP1R3D using Jurkat whole cell lysates