



[Go to Product page](#)

Datasheet for ABIN6264408
anti-PRDM14 antibody (N-Term)

3 Images

Overview

| | |
|----------------------|--|
| Quantity: | 100 µL |
| Target: | PRDM14 |
| Binding Specificity: | N-Term |
| Reactivity: | Human, Mouse, Rat |
| Host: | Rabbit |
| Clonality: | Polyclonal |
| Conjugate: | This PRDM14 antibody is un-conjugated |
| Application: | Western Blotting (WB), Immunohistochemistry (IHC), ELISA, Immunofluorescence (IF), Immunoprecipitation (IP), Chromatin Immunoprecipitation (ChIP), Immunocytochemistry (ICC) |

Product Details

| | |
|---------------|---|
| Immunogen: | A synthesized peptide derived from human PRDM14, corresponding to a region within N-terminal amino acids. |
| Isotype: | IgG |
| Specificity: | PRDM14 Antibody detects endogenous levels of total PRDM14. |
| Purification: | The antiserum was purified by peptide affinity chromatography using SulfoLink™ Coupling Resin (Thermo Fisher Scientific). |

Target Details

| | |
|-------------------|--|
| Target: | PRDM14 |
| Alternative Name: | PRDM14 (PRDM14 Products) |

Target Details

Background: Description: Transcription factor that has both positive and negative roles on transcription. Required for the maintenance of embryonic stem cell identity and the reacquisition of pluripotency in somatic cells. May play an essential role in germ cell development at 2 levels: the reacquisition of potential pluripotency, including SOX2 up-regulation, and successful epigenetic reprogramming, characterized by EHMT1 repression. Its association with CBFA2T2 is required for the functions in pluripotency and germ cell formation (By similarity). Directly up-regulates the expression of pluripotency gene POU5F1 through its proximal enhancer. Binds to the DNA consensus sequence 5'-GGTC[TC]CTAA-3'.

Gene: PRDM14

Molecular Weight: 64kDa

Gene ID: 63978

UniProt: [Q9GZV8](#)

Application Details

Application Notes: WB 1:500-1:2000, IHC 1:50-1:200, IF/ICC 1:50-1:200, IP 1:20-1:100, CHIP 1:20-1:100, ELISA(peptide) 1:20000-1:40000

Restrictions: For Research Use only

Handling

Format: Liquid

Concentration: 1 mg/mL

Buffer: Rabbit IgG in phosphate buffered saline , pH 7.4, 150 mM NaCl, 0.02 % sodium azide and 50 % glycerol.

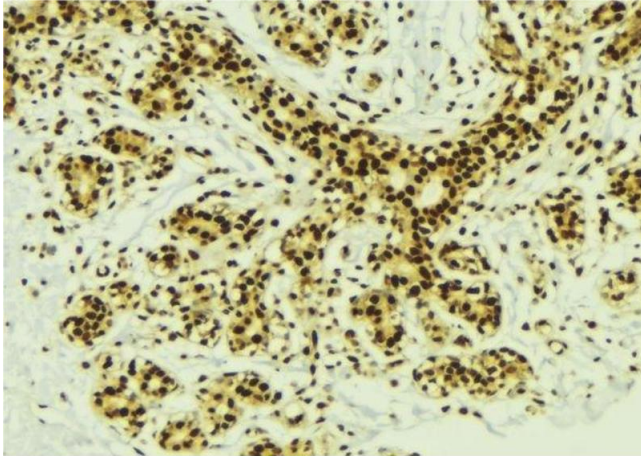
Preservative: Sodium azide

Precaution of Use: This product contains Sodium azide: a POISONOUS AND HAZARDOUS SUBSTANCE which should be handled by trained staff only.

Storage: -20 °C

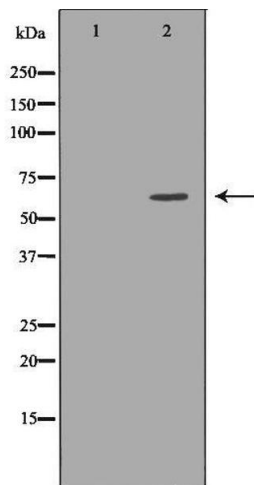
Storage Comment: Store at -20 °C. Stable for 12 months from date of receipt.

Expiry Date: 12 months



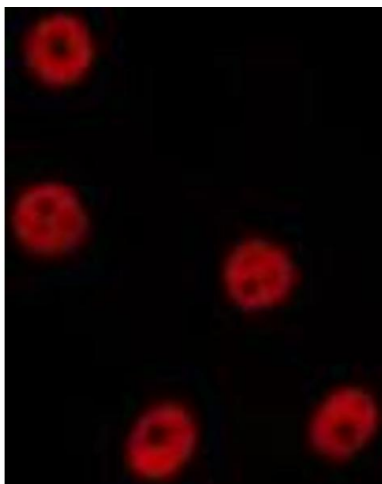
Immunohistochemistry

Image 1. ABIN6277629 at 1/100 staining Human breast cancer tissue by IHC-P. The sample was formaldehyde fixed and a heat mediated antigen retrieval step in citrate buffer was performed. The sample was then blocked and incubated with the antibody for 1.5 hours at 22°C. An HRP conjugated goat anti-rabbit antibody was used as the secondary



Western Blotting

Image 2. Western blot analysis of Hela whole cell lysates, using PRDM14 Antibody. The lane on the left is treated with the antigen-specific peptide.



Immunofluorescence (fixed cells)

Image 3. ABIN6277629 staining Hela by IF/ICC. The sample were fixed with PFA and permeabilized in 0.1% Triton X-100, then blocked in 10% serum for 45 minutes at 25°C. The primary antibody was diluted at 1/200 and incubated with the sample for 1 hour at 37°C. An Alexa Fluor 594 conjugated goat anti-rabbit IgG (H+L) Ab, diluted at 1/600, was used as the secondary antibody