



[Go to Product page](#)

Datasheet for ABIN6264431

## anti-Prolactin antibody (Internal Region)

### 2 Images

#### Overview

|                      |  |
|----------------------|--|
| Quantity:            | 100 µL   |
| Target:              | Prolactin (PRL)  |
| Binding Specificity: | Internal Region  |
| Reactivity:          | Human, Rat, Mouse  |
| Host:                | Rabbit   |
| Clonality:           | Polyclonal   |
| Conjugate:           | This Prolactin antibody is un-conjugated                 |
| Application:         | ELISA, Western Blotting (WB), Immunohistochemistry (IHC) |

#### Product Details

|                       |   |
|-----------------------|---|
| Immunogen:            | A synthesized peptide derived from human Prolactin/PRL, corresponding to a region within the internal amino acids.        |
| Isotype:              | IgG   |
| Specificity:          | Prolactin/PRL Antibody detects endogenous levels of total Prolactin/PRL.  |
| Predicted Reactivity: | Pig,Bovine,Horse,Sheep,Rabbit,Dog,Chicken   |
| Purification:         | The antiserum was purified by peptide affinity chromatography using SulfoLink™ Coupling Resin (Thermo Fisher Scientific). |

#### Target Details

|         |                 |
|---------|-----------------|
| Target: | Prolactin (PRL) |
|---------|-----------------|

## Target Details

---

|                   |  |
|-------------------|--|
| Alternative Name: | PRL ( <a href="#">PRL Products</a> )   |
| Background:       | Description: Prolactin acts primarily on the mammary gland by promoting lactation.<br>Gene: PRL  |
| Molecular Weight: | 26kDa  |
| Gene ID:          | 5617   |
| UniProt:          | <a href="#">P01236</a>   |
| Pathways:         | <a href="#">JAK-STAT Signaling</a> , <a href="#">Peptide Hormone Metabolism</a> , <a href="#">Response to Growth Hormone Stimulus</a> , <a href="#">Protein targeting to Nucleus</a> |

## Application Details

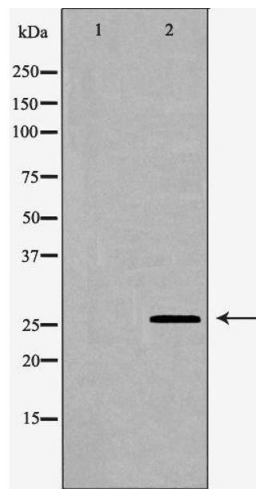
---

|                    |   |
|--------------------|---|
| Application Notes: | WB 1:500-1:2000, IHC 1:50-1:200, ELISA(peptide) 1:20000-1:40000 |
| Restrictions:      | For Research Use only   |

## Handling

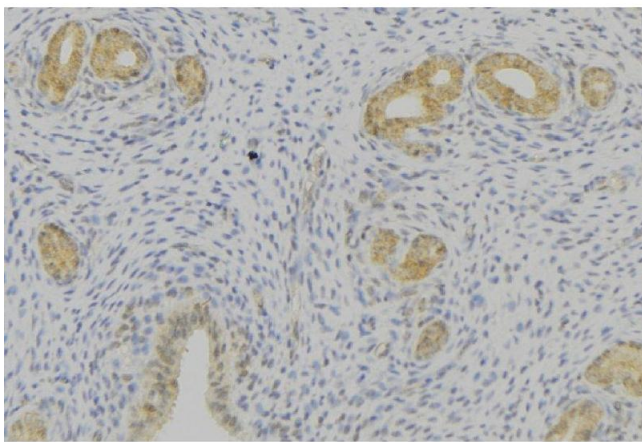
---

|                    |  |
|--------------------|--|
| Format:            | Liquid   |
| Concentration:     | 1 mg/mL  |
| Buffer:            | Rabbit IgG in phosphate buffered saline , pH 7.4, 150 mM NaCl, 0.02 % sodium azide and 50 % glycerol.                  |
| Preservative:      | Sodium azide   |
| Precaution of Use: | This product contains Sodium azide: a POISONOUS AND HAZARDOUS SUBSTANCE which should be handled by trained staff only. |
| Storage:           | -20 °C   |
| Storage Comment:   | Store at -20 °C. Stable for 12 months from date of receipt.  |
| Expiry Date:       | 12 months  |



### Western Blotting

**Image 1.** Western blot analysis of extracts of fetal pituitary, using PRL antibody. The lane on the left is treated with the antigen-specific peptide.



### Immunohistochemistry

**Image 2.** ABIN6276769 at 1/100 staining Human uterus tissue by IHC-P. The sample was formaldehyde fixed and a heat mediated antigen retrieval step in citrate buffer was performed. The sample was then blocked and incubated with the antibody for 1.5 hours at 22°C. An HRP conjugated goat anti-rabbit antibody was used as the secondary