

Datasheet for ABIN6264447

**anti-PRPF31 antibody (Internal Region)****3** Images[Go to Product page](#)

## Overview

Quantity:	100 µL
Target:	PRPF31
Binding Specificity:	Internal Region
Reactivity:	Human, Mouse, Rat
Host:	Rabbit
Clonality:	Polyclonal
Conjugate:	This PRPF31 antibody is un-conjugated
Application:	Western Blotting (WB), ELISA, Immunohistochemistry (IHC), Immunocytochemistry (ICC), Immunofluorescence (IF)

## Product Details

Immunogen:	A synthesized peptide derived from human PRPF31, corresponding to a region within the internal amino acids.
Isotype:	IgG
Specificity:	PRPF31 Antibody detects endogenous levels of total PRPF31.
Predicted Reactivity:	Zebrafish,Bovine,Horse,Rabbit,Xenopus
Purification:	The antiserum was purified by peptide affinity chromatography using SulfoLink™ Coupling Resin (Thermo Fisher Scientific).

## Target Details

Target:	PRPF31
---------	--------

## Target Details

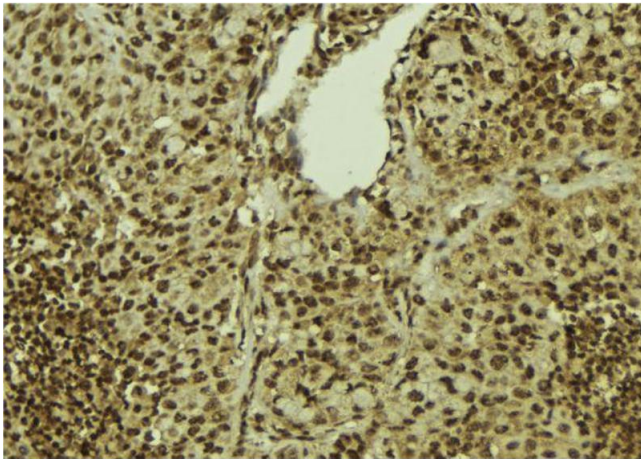
Alternative Name:	PRPF31 ( <a href="#">PRPF31 Products</a> )
Background:	Description: Involved in pre-mRNA splicing as component of the spliceosome (PubMed:11867543, PubMed:28781166). Required for the assembly of the U4/U5/U6 tri-snRNP complex, one of the building blocks of the spliceosome (PubMed:11867543). Gene: PRPF31
Molecular Weight:	55kDa
Gene ID:	26121
UniProt:	<a href="#">Q8WWY3</a>
Pathways:	<a href="#">Ribonucleoprotein Complex Subunit Organization</a>

## Application Details

Application Notes:	WB 1:1000, IHC 1:200, IF/ICC 1:100-1:500, ELISA(peptide) 1:20000-1:40000
Restrictions:	For Research Use only

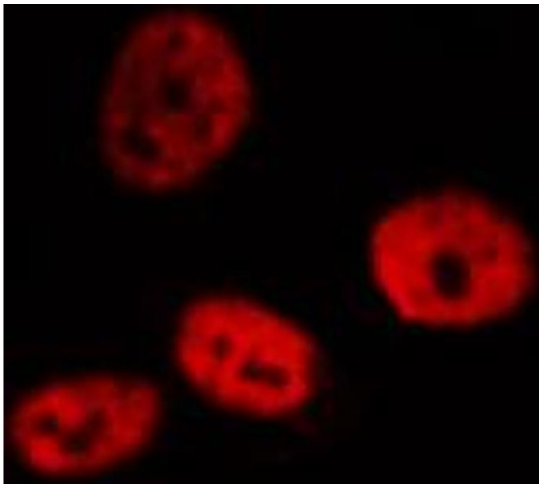
## Handling

Format:	Liquid
Concentration:	1 mg/mL
Buffer:	Rabbit IgG in phosphate buffered saline , pH 7.4, 150 mM NaCl, 0.02 % sodium azide and 50 % glycerol.
Preservative:	Sodium azide
Precaution of Use:	This product contains Sodium azide: a POISONOUS AND HAZARDOUS SUBSTANCE which should be handled by trained staff only.
Storage:	-20 °C
Storage Comment:	Store at -20 °C. Stable for 12 months from date of receipt.
Expiry Date:	12 months



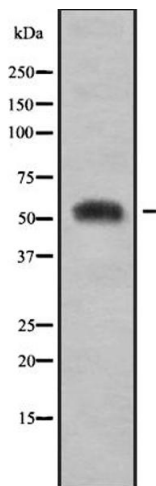
#### Immunohistochemistry

**Image 1.** ABIN6272401 at 1/100 staining Human breast cancer tissue by IHC-P. The sample was formaldehyde fixed and a heat mediated antigen retrieval step in citrate buffer was performed. The sample was then blocked and incubated with the antibody for 1.5 hours at 22°C. An HRP conjugated goat anti-rabbit antibody was used as the secondary.



#### Immunofluorescence (fixed cells)

**Image 2.** ABIN6272401 staining HeLa by IF/ICC. The sample were fixed with PFA and permeabilized in 0.1% Triton X-100, then blocked in 10% serum for 45 minutes at 25°C. The primary antibody was diluted at 1/200 and incubated with the sample for 1 hour at 37°C. An Alexa Fluor 594 conjugated goat anti-rabbit IgG (H+L) Ab, diluted at 1/600, was used as the secondary antibody.



#### Western Blotting

**Image 3.** Western blot analysis of PRPF31 using HeLa whole cell lysates