

Datasheet for ABIN6264465

**anti-PSG3 antibody**

## 2 Images

[Go to Product page](#)

## Overview

Quantity:	100 µL
Target:	PSG3
Reactivity:	Human, Mouse
Host:	Rabbit
Clonality:	Polyclonal
Conjugate:	This PSG3 antibody is un-conjugated
Application:	Western Blotting (WB), ELISA, Immunohistochemistry (IHC)

## Product Details

Immunogen:	A synthesized peptide derived from human PSG3
Isotype:	IgG
Specificity:	PSG3 Antibody detects endogenous levels of total PSG3
Cross-Reactivity:	Human, Mouse (Murine)
Purification:	The antiserum was purified by peptide affinity chromatography using SulfoLink™ Coupling Resin (Thermo Fisher Scientific).

## Target Details

Target:	PSG3
Alternative Name:	PSG3 ( <a href="#">PSG3 Products</a> )
Background:	Gene: PSG3

## Target Details

Molecular Weight:	48 kDa
Gene ID:	5671
UniProt:	<a href="#">Q16557</a>

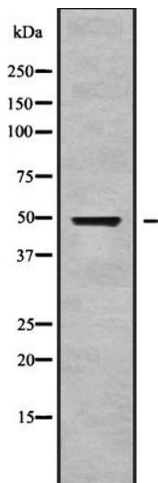
## Application Details

Application Notes:	WB 1:1000-3000 IHC 1:200
Restrictions:	For Research Use only

## Handling

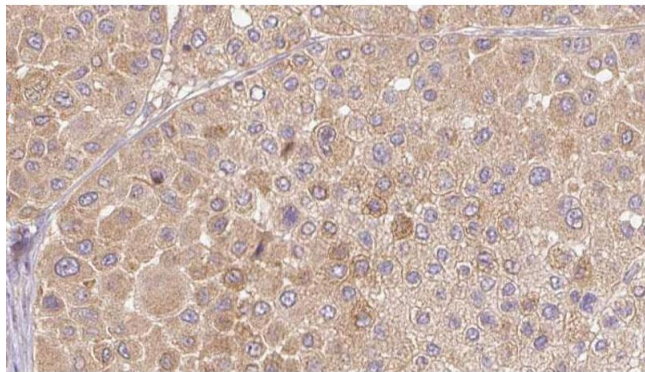
Format:	Liquid
Concentration:	1 mg/mL
Buffer:	Rabbit IgG in phosphate buffered saline , pH 7.4, 150 mM NaCl, 0.02 % sodium azide and 50 % glycerol.
Preservative:	Sodium azide
Precaution of Use:	This product contains Sodium azide: a POISONOUS AND HAZARDOUS SUBSTANCE which should be handled by trained staff only.
Storage:	-20 °C
Storage Comment:	Store at -20 °C.Stable for 12 months from date of receipt
Expiry Date:	12 months

## Images



### Western Blotting

**Image 1.** Western blot analysis of PSG3 using HepG2 whole cell lysates



#### Immunohistochemistry

**Image 2.** ABIN6272654 at 1/100 staining Human Melanoma tissue by IHC-P. The sample was formaldehyde fixed and a heat mediated antigen retrieval step in citrate buffer was performed. The sample was then blocked and incubated with the antibody for 1.5 hours at 22°C. An HRP conjugated goat anti-rabbit antibody was used as the secondary.