

Datasheet for ABIN6264482
anti-PSMC5 antibody (Internal Region)[Go to Product page](#)

2 Images

Overview

| | |
|----------------------|--|
| Quantity: | 100 µL |
| Target: | PSMC5 |
| Binding Specificity: | Internal Region |
| Reactivity: | Human, Mouse, Rat |
| Host: | Rabbit |
| Clonality: | Polyclonal |
| Conjugate: | This PSMC5 antibody is un-conjugated |
| Application: | Western Blotting (WB), Immunohistochemistry (IHC), ELISA |

Product Details

| | |
|-----------------------|---|
| Immunogen: | A synthesized peptide derived from human PSMC5, corresponding to a region within the internal amino acids. |
| Isotype: | IgG |
| Specificity: | PSMC5 Antibody detects endogenous levels of total PSMC5. |
| Predicted Reactivity: | Pig,Zebrafish,Bovine,Horse,Sheep,Rabbit,Dog,Chicken,Xenopus |
| Purification: | The antiserum was purified by peptide affinity chromatography using SulfoLink™ Coupling Resin (Thermo Fisher Scientific). |

Target Details

| | |
|---------|-------|
| Target: | PSMC5 |
|---------|-------|

Target Details

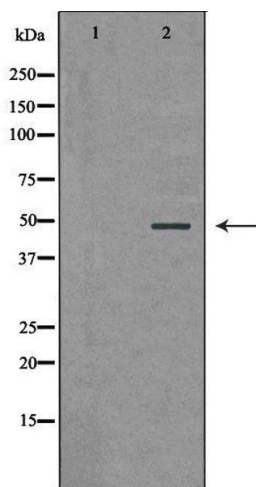
| | |
|-------------------|---|
| Alternative Name: | PSMC5 (PSMC5 Products) |
| Background: | <p>Description: Component of the 26S proteasome, a multiprotein complex involved in the ATP-dependent degradation of ubiquitinated proteins. This complex plays a key role in the maintenance of protein homeostasis by removing misfolded or damaged proteins, which could impair cellular functions, and by removing proteins whose functions are no longer required. Therefore, the proteasome participates in numerous cellular processes, including cell cycle progression, apoptosis, or DNA damage repair. PSMC5 belongs to the heterohexameric ring of AAA (ATPases associated with diverse cellular activities) proteins that unfolds ubiquitinated target proteins that are concurrently translocated into a proteolytic chamber and degraded into peptides.</p> <p>Gene: PSMC5</p> |
| Molecular Weight: | 46kDa |
| Gene ID: | 5705 |
| UniProt: | P62195 |
| Pathways: | Mitotic G1-G1/S Phases , DNA Replication , Synthesis of DNA , Ubiquitin Proteasome Pathway |

Application Details

| | |
|--------------------|---|
| Application Notes: | WB 1:500-1:2000, IHC 1:50-1:200, ELISA(peptide) 1:20000-1:40000 |
| Restrictions: | For Research Use only |

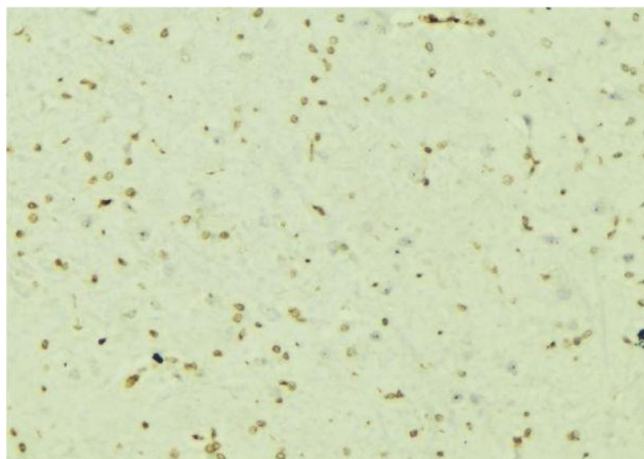
Handling

| | |
|--------------------|--|
| Format: | Liquid |
| Concentration: | 1 mg/mL |
| Buffer: | Rabbit IgG in phosphate buffered saline , pH 7.4, 150 mM NaCl, 0.02 % sodium azide and 50 % glycerol. |
| Preservative: | Sodium azide |
| Precaution of Use: | This product contains Sodium azide: a POISONOUS AND HAZARDOUS SUBSTANCE which should be handled by trained staff only. |
| Storage: | -20 °C |
| Storage Comment: | Store at -20 °C. Stable for 12 months from date of receipt. |



Western Blotting

Image 1. Western blot analysis of extracts of HepG2, using PSMC5 antibody. The lane on the left is treated with the antigen-specific peptide.



Immunohistochemistry

Image 2. ABIN6276710 at 1/100 staining Mouse brain tissue by IHC-P. The sample was formaldehyde fixed and a heat mediated antigen retrieval step in citrate buffer was performed. The sample was then blocked and incubated with the antibody for 1.5 hours at 22°C. An HRP conjugated goat anti-rabbit antibody was used as the secondary