

Datasheet for ABIN6264534
anti-PYCR1 antibody (Internal Region)

3 Images

[Go to Product page](#)

Overview

Quantity:	100 µL
Target:	PYCR1
Binding Specificity:	Internal Region
Reactivity:	Human, Mouse, Rat
Host:	Rabbit
Clonality:	Polyclonal
Conjugate:	This PYCR1 antibody is un-conjugated
Application:	Western Blotting (WB), Immunohistochemistry (IHC), Immunofluorescence (IF), Immunocytochemistry (ICC)

Product Details

Immunogen:	A synthesized peptide derived from human PYCR1, corresponding to a region within the internal amino acids.
Isotype:	IgG
Specificity:	PYCR1 Antibody detects endogenous levels of total PYCR1.
Predicted Reactivity:	Pig,Bovine,Horse,Sheep,Dog,Xenopus
Purification:	The antiserum was purified by peptide affinity chromatography using SulfoLink™ Coupling Resin (Thermo Fisher Scientific).

Target Details

Target:	PYCR1
---------	-------

Target Details

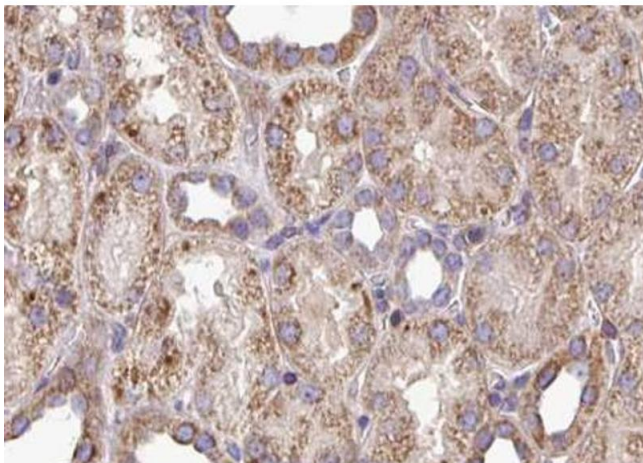
Alternative Name:	PYCR1 (PYCR1 Products)
Background:	Description: Housekeeping enzyme that catalyzes the last step in proline biosynthesis. Can utilize both NAD and NADP, but has higher affinity for NAD. Involved in the cellular response to oxidative stress. Gene: PYCR1
Molecular Weight:	33 kDa, 35 kDa
Gene ID:	5831
UniProt:	P32322

Application Details

Application Notes:	WB 1:500-1:2000, IHC 1:50-1:200, IF/ICC 1:100-1:500
Restrictions:	For Research Use only

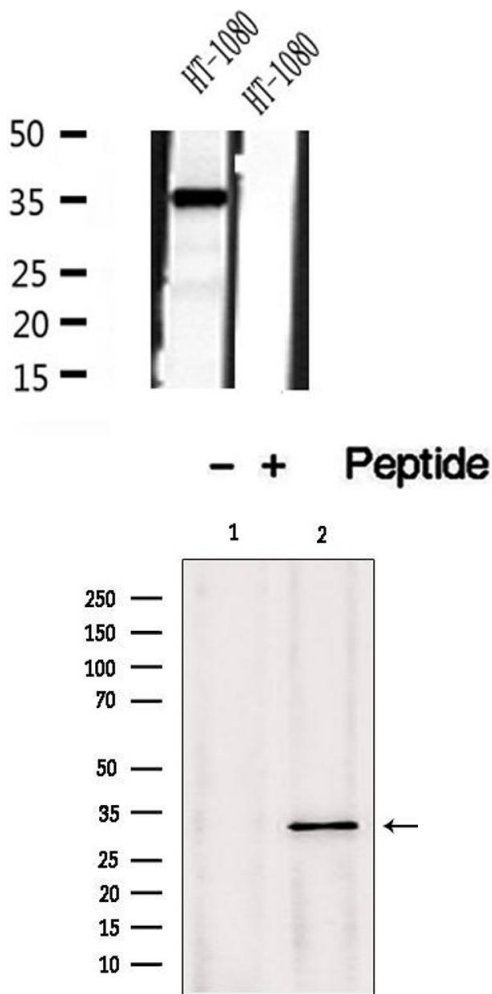
Handling

Format:	Liquid
Concentration:	1 mg/mL
Buffer:	Rabbit IgG in phosphate buffered saline , pH 7.4, 150 mM NaCl, 0.02 % sodium azide and 50 % glycerol.
Preservative:	Sodium azide
Precaution of Use:	This product contains Sodium azide: a POISONOUS AND HAZARDOUS SUBSTANCE which should be handled by trained staff only.
Storage:	-20 °C
Storage Comment:	Store at -20 °C. Stable for 12 months from date of receipt.
Expiry Date:	12 months



Immunohistochemistry

Image 1. ABIN6272895 at 1/100 staining Mouse kidney tissue by IHC-P. The sample was formaldehyde fixed and a heat mediated antigen retrieval step in citrate buffer was performed. The sample was then blocked and incubated with the antibody for 1.5 hours at 22°C. An HRP conjugated goat anti-rabbit antibody was used as the secondary.



Western Blotting

Image 2. Western blot analysis of extracts of HT-1080 cells, using PYCR1 antibody.

Western Blotting

Image 3. Western blot analysis of extracts from Mouse Myeloma cell, using PYCR1 antibody. Lane 1 was treated with the blocking peptide.