

Datasheet for ABIN6264535  
**anti-PYGB antibody (C-Term)**[Go to Product page](#)

## 2 Images

## Overview

Quantity:	100 µL
Target:	PYGB (GPBB)
Binding Specificity:	C-Term
Reactivity:	Human, Mouse, Rat
Host:	Rabbit
Clonality:	Polyclonal
Conjugate:	This PYGB antibody is un-conjugated
Application:	Western Blotting (WB), Immunohistochemistry (IHC)

## Product Details

Immunogen:	A synthesized peptide derived from human PYGB, corresponding to a region within C-terminal amino acids.
Isotype:	IgG
Specificity:	PYGB Antibody detects endogenous levels of total PYGB.
Predicted Reactivity:	Zebrafish,Bovine,Horse,Sheep,Rabbit,Dog,Chicken,Xenopus
Purification:	The antiserum was purified by peptide affinity chromatography using SulfoLink™ Coupling Resin (Thermo Fisher Scientific).

## Target Details

Target:	PYGB (GPBB)
---------	-------------

## Target Details

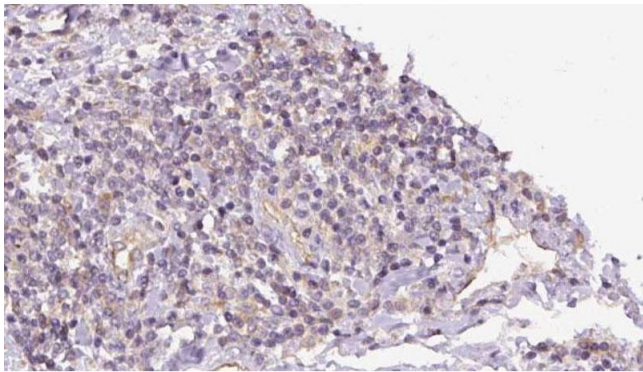
Alternative Name:	PYGB ( <a href="#">GPBB Products</a> )
Background:	<p>Description: Glycogen phosphorylase that regulates glycogen mobilization (PubMed:27402852). Phosphorylase is an important allosteric enzyme in carbohydrate metabolism (PubMed:3346228). Enzymes from different sources differ in their regulatory mechanisms and in their natural substrates (PubMed:3346228). However, all known phosphorylases share catalytic and structural properties (PubMed:3346228).</p> <p>Gene: PYGB</p>
Molecular Weight:	97 kDa
Gene ID:	5834
UniProt:	<a href="#">P11216</a>
Pathways:	<a href="#">Cellular Glucan Metabolic Process</a>

## Application Details

Application Notes:	WB 1:500-1:2000, IHC 1:50-1:200
Restrictions:	For Research Use only

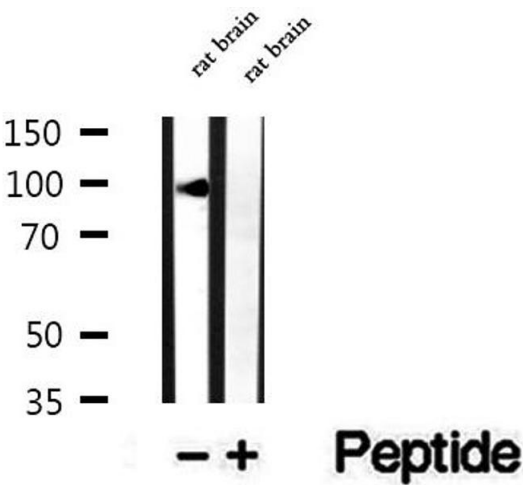
## Handling

Format:	Liquid
Concentration:	1 mg/mL
Buffer:	Rabbit IgG in phosphate buffered saline , pH 7.4, 150 mM NaCl, 0.02 % sodium azide and 50 % glycerol.
Preservative:	Sodium azide
Precaution of Use:	This product contains Sodium azide: a POISONOUS AND HAZARDOUS SUBSTANCE which should be handled by trained staff only.
Storage:	-20 °C
Storage Comment:	Store at -20 °C. Stable for 12 months from date of receipt.
Expiry Date:	12 months



### Immunohistochemistry

**Image 1.** ABIN6273152 at 1/100 staining Human lymph cancer tissue by IHC-P. The sample was formaldehyde fixed and a heat mediated antigen retrieval step in citrate buffer was performed. The sample was then blocked and incubated with the antibody for 1.5 hours at 22°C. An HRP conjugated goat anti-rabbit antibody was used as the secondary.



### Western Blotting

**Image 2.** Western blot analysis of extracts of rat brain tissue, using PYGB antibody.