



[Go to Product page](#)

Datasheet for ABIN6264545
anti-SIK3 antibody (Internal Region)

2 Images

Overview

Quantity:	100 µL
Target:	SIK3
Binding Specificity:	Internal Region
Reactivity:	Human, Mouse, Rat
Host:	Rabbit
Clonality:	Polyclonal
Conjugate:	This SIK3 antibody is un-conjugated
Application:	ELISA, Western Blotting (WB), Immunofluorescence (IF), Immunocytochemistry (ICC)

Product Details

Immunogen:	A synthesized peptide derived from human QSK, corresponding to a region within the internal amino acids.
Isotype:	IgG
Specificity:	QSK Antibody detects endogenous levels of total QSK.
Predicted Reactivity:	Pig,Zebrafish,Bovine,Horse,Sheep,Rabbit,Dog,Chicken,Xenopus
Purification:	The antiserum was purified by peptide affinity chromatography using SulfoLink™ Coupling Resin (Thermo Fisher Scientific).

Target Details

Target:	SIK3
---------	------

Target Details

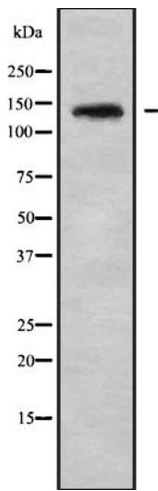
Alternative Name:	SIK3 (SIK3 Products)
Background:	Description: ATP + a protein = ADP + a phosphoprotein. Gene: SIK3
Molecular Weight:	140kDa
Gene ID:	23387
UniProt:	Q9Y2K2

Application Details

Application Notes:	WB 1:1000, IF/ICC 1:100-1:500, ELISA(peptide) 1:20000-1:40000
Restrictions:	For Research Use only

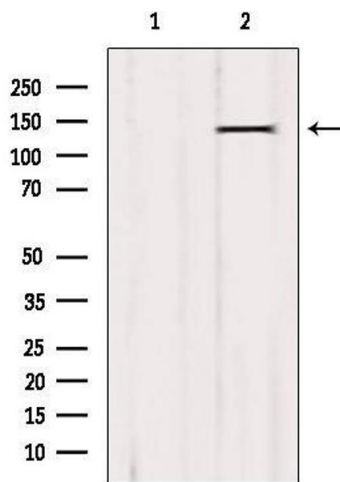
Handling

Format:	Liquid
Concentration:	1 mg/mL
Buffer:	Rabbit IgG in phosphate buffered saline , pH 7.4, 150 mM NaCl, 0.02 % sodium azide and 50 % glycerol.
Preservative:	Sodium azide
Precaution of Use:	This product contains Sodium azide: a POISONOUS AND HAZARDOUS SUBSTANCE which should be handled by trained staff only.
Storage:	-20 °C
Storage Comment:	Store at -20 °C. Stable for 12 months from date of receipt.
Expiry Date:	12 months



Western Blotting

Image 1. Western blot analysis of QSK using LOVO whole cell lysates



Western Blotting

Image 2. Western blot analysis of extracts from B16F10, using QSK Antibody. The lane on the left was treated with blocking peptide.