



[Go to Product page](#)

Datasheet for ABIN6264559
anti-RAB17 antibody (Internal Region)

1 Image

Overview

Quantity:	100 µL
Target:	RAB17
Binding Specificity:	Internal Region
Reactivity:	Human, Mouse, Rat
Host:	Rabbit
Clonality:	Polyclonal
Conjugate:	This RAB17 antibody is un-conjugated
Application:	Western Blotting (WB), ELISA, Immunofluorescence (IF), Immunocytochemistry (ICC)

Product Details

Immunogen:	A synthesized peptide derived from human RAB17, corresponding to a region within the internal amino acids.
Isotype:	IgG
Specificity:	RAB17 Antibody detects endogenous levels of total RAB17.
Predicted Reactivity:	Pig,Bovine,Sheep,Dog
Purification:	The antiserum was purified by peptide affinity chromatography using SulfoLink™ Coupling Resin (Thermo Fisher Scientific).

Target Details

Target:	RAB17
---------	-------

Target Details

Alternative Name: RAB17 ([RAB17 Products](#))

Background: Description: The small GTPases Rab are key regulators of intracellular membrane trafficking, from the formation of transport vesicles to their fusion with membranes. Rabs cycle between an inactive GDP-bound form and an active GTP-bound form that is able to recruit to membranes different set of downstream effectors directly responsible for vesicle formation, movement, tethering and fusion. That Rab is involved in transcytosis, the directed movement of endocytosed material through the cell and its exocytosis from the plasma membrane at the opposite side. Mainly observed in epithelial cells, transcytosis mediates for instance, the transcellular transport of immunoglobulins from the basolateral surface to the apical surface. Most probably controls membrane trafficking through apical recycling endosomes in a post-endocytic step of transcytosis. Required for melanosome transport and release from melanocytes, it also regulates dendrite and dendritic spine development (By similarity). May also play a role in cell migration.

Gene: RAB17

Molecular Weight: 23 kDa

Gene ID: 64284

UniProt: [Q9H0T7](#)

Application Details

Application Notes: WB 1:1000-3000, IF/ICC 1:100-1:500, ELISA(peptide) 1:20000-1:40000

Restrictions: For Research Use only

Handling

Format: Liquid

Concentration: 1 mg/mL

Buffer: Rabbit IgG in phosphate buffered saline , pH 7.4, 150 mM NaCl, 0.02 % sodium azide and 50 % glycerol.

Preservative: Sodium azide

Precaution of Use: This product contains Sodium azide: a POISONOUS AND HAZARDOUS SUBSTANCE which should be handled by trained staff only.

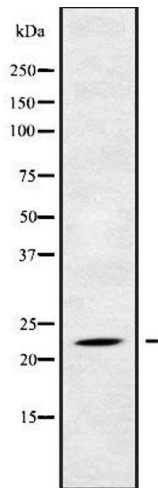
Storage: -20 °C

Handling

Storage Comment: Store at -20 °C. Stable for 12 months from date of receipt.

Expiry Date: 12 months

Images



Western Blotting

Image 1. Western blot analysis of RAB17 using HuvEc whole cell lysates