



Datasheet for ABIN6264560
anti-RAB19 antibody (Internal Region)



[Go to Product page](#)

1 Image

Overview

| | |
|----------------------|--|
| Quantity: | 100 µL |
| Target: | RAB19 |
| Binding Specificity: | Internal Region |
| Reactivity: | Human, Mouse, Rat |
| Host: | Rabbit |
| Clonality: | Polyclonal |
| Conjugate: | This RAB19 antibody is un-conjugated |
| Application: | Western Blotting (WB), ELISA, Immunohistochemistry (IHC) |

Product Details

| | |
|-----------------------|---|
| Immunogen: | A synthesized peptide derived from human RAB19, corresponding to a region within the internal amino acids. |
| Isotype: | IgG |
| Specificity: | RAB19 Antibody detects endogenous levels of total RAB19. |
| Predicted Reactivity: | Pig,Bovine,Sheep |
| Purification: | The antiserum was purified by peptide affinity chromatography using SulfoLink™ Coupling Resin (Thermo Fisher Scientific). |

Target Details

| | |
|---------|-------|
| Target: | RAB19 |
|---------|-------|

Target Details

Alternative Name: RAB19 ([RAB19 Products](#))

Background: Gene: RAB19

Molecular Weight: 24 kDa

Gene ID: 401409

UniProt: [A4D1S5](#)

Application Details

Application Notes: WB 1:1000-3000, IHC 1:50-1:200, ELISA(peptide) 1:20000-1:40000

Restrictions: For Research Use only

Handling

Format: Liquid

Concentration: 1 mg/mL

Buffer: Rabbit IgG in phosphate buffered saline , pH 7.4, 150 mM NaCl, 0.02 % sodium azide and 50 % glycerol.

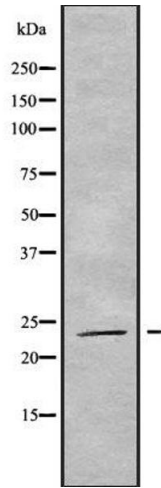
Preservative: Sodium azide

Precaution of Use: This product contains Sodium azide: a POISONOUS AND HAZARDOUS SUBSTANCE which should be handled by trained staff only.

Storage: -20 °C

Storage Comment: Store at -20 °C. Stable for 12 months from date of receipt.

Expiry Date: 12 months



Western Blotting

Image 1. Western blot analysis of RAB19 using HT29 whole cell lysates