

Datasheet for ABIN6264561
anti-RAB1A antibody (C-Term)[Go to Product page](#)

1 Image

Overview

Quantity:	100 µL
Target:	RAB1A
Binding Specificity:	C-Term
Reactivity:	Human, Mouse, Rat
Host:	Rabbit
Clonality:	Polyclonal
Conjugate:	This RAB1A antibody is un-conjugated
Application:	Western Blotting (WB), ELISA, Immunofluorescence (IF), Immunocytochemistry (ICC)

Product Details

Immunogen:	A synthesized peptide derived from human RAB1A, corresponding to a region within C-terminal amino acids.
Isotype:	IgG
Specificity:	RAB1A Antibody detects endogenous levels of total RAB1A.
Predicted Reactivity:	Pig,Bovine,Horse,Sheep,Rabbit,Dog,Chicken
Purification:	The antiserum was purified by peptide affinity chromatography using SulfoLink™ Coupling Resin (Thermo Fisher Scientific).

Target Details

Target:	RAB1A
---------	-------

Target Details

Alternative Name:	RAB1A (RAB1A Products)
Background:	<p>Description: The small GTPases Rab are key regulators of intracellular membrane trafficking, from the formation of transport vesicles to their fusion with membranes. Rabs cycle between an inactive GDP-bound form and an active GTP-bound form that is able to recruit to membranes different sets of downstream effectors directly responsible for vesicle formation, movement, tethering and fusion. RAB1A regulates vesicular protein transport from the endoplasmic reticulum (ER) to the Golgi compartment and on to the cell surface, and plays a role in IL-8 and growth hormone secretion. Regulates the level of CASR present at the cell membrane. Plays a role in cell adhesion and cell migration, via its role in protein trafficking. Plays a role in autophagosome assembly and cellular defense reactions against pathogenic bacteria. Plays a role in microtubule-dependent protein transport by early endosomes and in anterograde melanosome transport.</p> <p>Gene: RAB1A</p>
Molecular Weight:	23 kDa
Gene ID:	5861
UniProt:	P62820
Pathways:	SARS-CoV-2 Protein Interactome

Application Details

Application Notes:	WB 1:1000-3000, IF/ICC 1:100-1:500, ELISA(peptide) 1:20000-1:40000
Restrictions:	For Research Use only

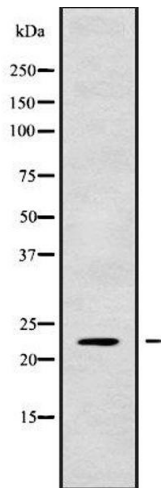
Handling

Format:	Liquid
Concentration:	1 mg/mL
Buffer:	Rabbit IgG in phosphate buffered saline , pH 7.4, 150 mM NaCl, 0.02 % sodium azide and 50 % glycerol.
Preservative:	Sodium azide
Precaution of Use:	This product contains Sodium azide: a POISONOUS AND HAZARDOUS SUBSTANCE which should be handled by trained staff only.
Storage:	-20 °C

Handling

Storage Comment:	Store at -20 °C. Stable for 12 months from date of receipt.
Expiry Date:	12 months

Images



Western Blotting

Image 1. Western blot analysis of RAB1A using HT29 whole cell lysates