



[Go to Product page](#)

Datasheet for ABIN6264569

## anti-RAB28 antibody (Internal Region)

### 2 Images

#### Overview

Quantity:	100 µL
Target:	RAB28
Binding Specificity:	Internal Region
Reactivity:	Human, Mouse, Rat
Host:	Rabbit
Clonality:	Polyclonal
Conjugate:	This RAB28 antibody is un-conjugated
Application:	ELISA, Western Blotting (WB), Immunohistochemistry (IHC)

#### Product Details

Immunogen:	A synthesized peptide derived from human RAB28, corresponding to a region within the internal amino acids.
Isotype:	IgG
Specificity:	RAB28 Antibody detects endogenous levels of total RAB28.
Predicted Reactivity:	Pig,Zebrafish,Bovine,Horse,Sheep,Rabbit,Dog,Chicken
Purification:	The antiserum was purified by peptide affinity chromatography using SulfoLink™ Coupling Resin (Thermo Fisher Scientific).

#### Target Details

Target:	RAB28
---------	-------

## Target Details

---

Alternative Name: RAB28 ([RAB28 Products](#))

Background: Gene: RAB28

Molecular Weight: 25 kDa

Gene ID: 9364

UniProt: [P51157](#)

## Application Details

---

Application Notes: WB 1:1000-3000, IHC 1:50-1:200, ELISA(peptide) 1:20000-1:40000

Restrictions: For Research Use only

## Handling

---

Format: Liquid

Concentration: 1 mg/mL

Buffer: Rabbit IgG in phosphate buffered saline , pH 7.4, 150 mM NaCl, 0.02 % sodium azide and 50 % glycerol.

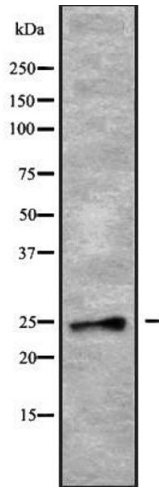
Preservative: Sodium azide

Precaution of Use: This product contains Sodium azide: a POISONOUS AND HAZARDOUS SUBSTANCE which should be handled by trained staff only.

Storage: -20 °C

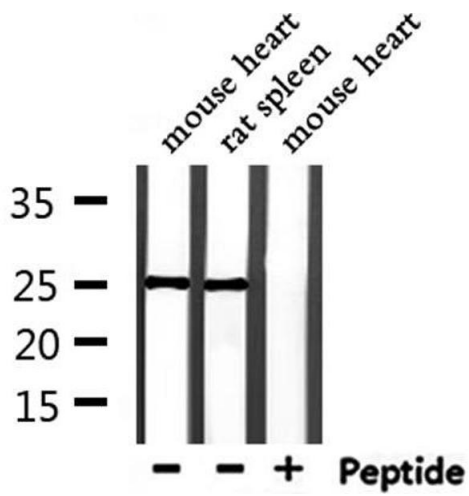
Storage Comment: Store at -20 °C. Stable for 12 months from date of receipt.

Expiry Date: 12 months



### Western Blotting

**Image 1.** Western blot analysis of RAB28 using COLO205 whole cell lysates



### Western Blotting

**Image 2.** Western blot analysis of extracts from mouse heart and rat spleen, using RAB28 Antibody.