



[Go to Product page](#)

Datasheet for ABIN6264581
anti-RAB40AL antibody

1 Image

Overview

Quantity:	100 µL
Target:	RAB40AL
Reactivity:	Human
Host:	Rabbit
Clonality:	Polyclonal
Conjugate:	This RAB40AL antibody is un-conjugated
Application:	Western Blotting (WB), ELISA

Product Details

Immunogen:	A synthesized peptide derived from human RAB40A/L
Isotype:	IgG
Specificity:	RAB40A/L Antibody detects endogenous levels of total RAB40A/L
Cross-Reactivity:	Human
Purification:	The antiserum was purified by peptide affinity chromatography using SulfoLink™ Coupling Resin (Thermo Fisher Scientific).

Target Details

Target:	RAB40AL
Alternative Name:	RAB40A/L (RAB40AL Products)
Background:	Description: May be a substrate-recognition component of a SCF-like ECS (Elongin-Cullin-SOCS-

Target Details

box protein) E3 ubiquitin ligase complex which mediates the ubiquitination and subsequent proteasomal degradation of target proteins.

Gene: RAB40AL

Molecular Weight: 31 kDa

Gene ID: 282808

UniProt: [P0C0E4](#), [Q8WXH6](#)

Application Details

Application Notes: WB 1:1000-3000

Restrictions: For Research Use only

Handling

Format: Liquid

Concentration: 1 mg/mL

Buffer: Rabbit IgG in phosphate buffered saline , pH 7.4, 150 mM NaCl, 0.02 % sodium azide and 50 % glycerol.

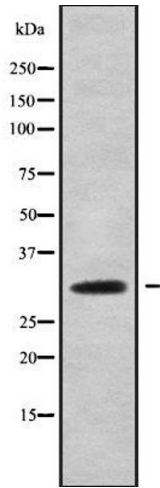
Preservative: Sodium azide

Precaution of Use: This product contains Sodium azide: a POISONOUS AND HAZARDOUS SUBSTANCE which should be handled by trained staff only.

Storage: -20 °C

Storage Comment: Store at -20 °C.Stable for 12 months from date of receipt

Expiry Date: 12 months



Western Blotting

Image 1. Western blot analysis of RAB40A/L using HeLa whole cell lysates