

Datasheet for ABIN6264633
anti-RANGAP1 antibody (N-Term)

3 Images

[Go to Product page](#)

Overview

Quantity:	100 µL
Target:	RANGAP1
Binding Specificity:	N-Term
Reactivity:	Human, Mouse, Rat
Host:	Rabbit
Clonality:	Polyclonal
Conjugate:	This RANGAP1 antibody is un-conjugated
Application:	Western Blotting (WB), Immunohistochemistry (IHC), ELISA

Product Details

Immunogen:	A synthesized peptide derived from human RANGAP1, corresponding to a region within N-terminal amino acids.
Isotype:	IgG
Specificity:	RANGAP1 Antibody detects endogenous levels of total RANGAP1.
Predicted Reactivity:	Bovine,Horse,Sheep,Rabbit,Dog,Chicken
Purification:	The antiserum was purified by peptide affinity chromatography using SulfoLink™ Coupling Resin (Thermo Fisher Scientific).

Target Details

Target:	RANGAP1
---------	---------

Target Details

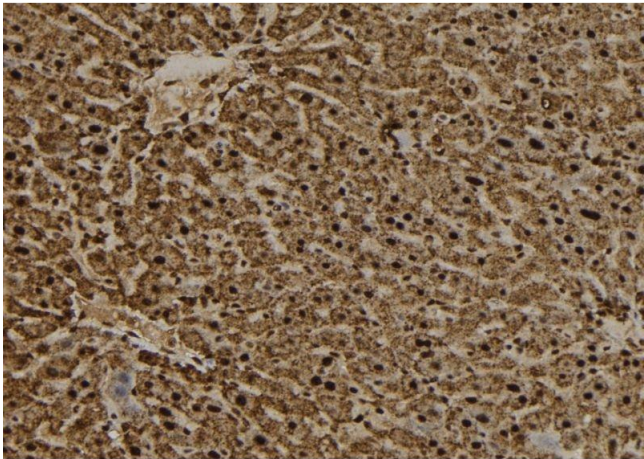
Alternative Name:	RANGAP1 (RANGAP1 Products)
Background:	<p>Description: GTPase activator for RAN (PubMed:8146159, PubMed:8896452, PubMed:16428860). Converts cytoplasmic GTP-bound RAN to GDP-bound RAN, which is essential for RAN-mediated nuclear import and export (PubMed:8896452, PubMed:27160050). Mediates dissociation of cargo from nuclear export complexes containing XPO1, RAN and RANBP2 after nuclear export (PubMed:27160050).</p> <p>Gene: RANGAP1</p>
Molecular Weight:	63kDa
Gene ID:	5905
UniProt:	P46060
Pathways:	M Phase , Protein targeting to Nucleus

Application Details

Application Notes:	WB 1:500-1:2000, IHC 1:50-1:200, ELISA(peptide) 1:20000-1:40000
Restrictions:	For Research Use only

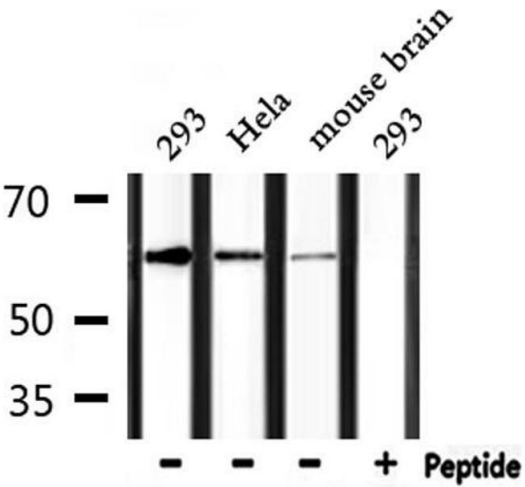
Handling

Format:	Liquid
Concentration:	1 mg/mL
Buffer:	Rabbit IgG in phosphate buffered saline , pH 7.4, 150 mM NaCl, 0.02 % sodium azide and 50 % glycerol.
Preservative:	Sodium azide
Precaution of Use:	This product contains Sodium azide: a POISONOUS AND HAZARDOUS SUBSTANCE which should be handled by trained staff only.
Storage:	-20 °C
Storage Comment:	Store at -20 °C. Stable for 12 months from date of receipt.
Expiry Date:	12 months



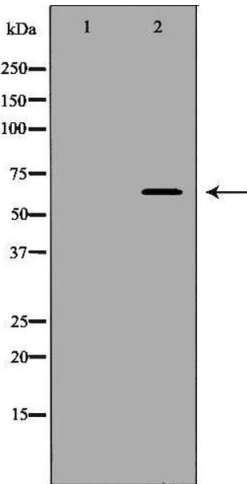
Immunohistochemistry

Image 1. ABIN6277558 at 1/100 staining Mouse liver tissue by IHC-P. The sample was formaldehyde fixed and a heat mediated antigen retrieval step in citrate buffer was performed. The sample was then blocked and incubated with the antibody for 1.5 hours at 22°C. An HRP conjugated goat anti-rabbit antibody was used as the secondary



Western Blotting

Image 2. Western blot analysis of extracts from 293, HeLa and mouse brain, using RANGAP1 Antibody.



Western Blotting

Image 3. Western blot analysis of 293T whole cell lysates, using RANGAP1 Antibody. The lane on the left is treated with the antigen-specific peptide.