



[Go to Product page](#)

Datasheet for ABIN6264645
anti-RASA1 antibody (C-Term)

2 Images

Overview

Quantity:	100 µL
Target:	RASA1
Binding Specificity:	C-Term
Reactivity:	Human, Rat, Mouse
Host:	Rabbit
Clonality:	Polyclonal
Conjugate:	This RASA1 antibody is un-conjugated
Application:	Western Blotting (WB), ELISA, Immunohistochemistry (IHC)

Product Details

Immunogen:	A synthesized peptide derived from human RASA1, corresponding to a region within C-terminal amino acids.
Isotype:	IgG
Specificity:	RASA1 Antibody detects endogenous levels of total RASA1.
Predicted Reactivity:	Pig,Bovine,Horse,Sheep,Rabbit,Dog,Chicken,Xenopus
Purification:	The antiserum was purified by peptide affinity chromatography using SulfoLink™ Coupling Resin (Thermo Fisher Scientific).

Target Details

Target:	RASA1
---------	-------

Target Details

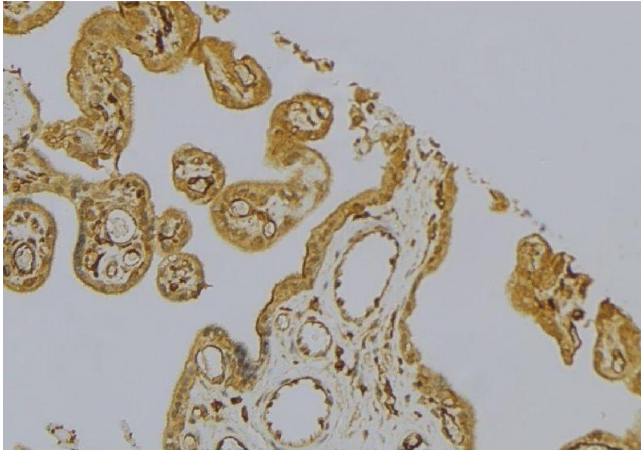
Alternative Name:	RASA1 (RASA1 Products)
Background:	Description: Inhibitory regulator of the Ras-cyclic AMP pathway. Stimulates the GTPase of normal but not oncogenic Ras p21, this stimulation may be further increased in the presence of NCK1. Gene: RASA1
Molecular Weight:	116kDa
Gene ID:	5921
UniProt:	P20936
Pathways:	Regulation of Actin Filament Polymerization , Signaling of Hepatocyte Growth Factor Receptor , VEGFR1 Specific Signals

Application Details

Application Notes:	WB 1:500-1:2000, IHC 1:50-1:200, ELISA(peptide) 1:20000-1:40000
Restrictions:	For Research Use only

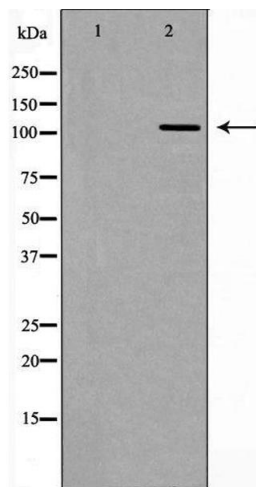
Handling

Format:	Liquid
Concentration:	1 mg/mL
Buffer:	Rabbit IgG in phosphate buffered saline , pH 7.4, 150 mM NaCl, 0.02 % sodium azide and 50 % glycerol.
Preservative:	Sodium azide
Precaution of Use:	This product contains Sodium azide: a POISONOUS AND HAZARDOUS SUBSTANCE which should be handled by trained staff only.
Storage:	-20 °C
Storage Comment:	Store at -20 °C. Stable for 12 months from date of receipt.
Expiry Date:	12 months



Immunohistochemistry

Image 1. ABIN6276782 at 1/100 staining Mouse placenta tissue by IHC-P. The sample was formaldehyde fixed and a heat mediated antigen retrieval step in citrate buffer was performed. The sample was then blocked and incubated with the antibody for 1.5 hours at 22°C. An HRP conjugated goat anti-rabbit antibody was used as the secondary



Western Blotting

Image 2. Western blot analysis of extracts of mouse testis tissue, using RASA1 antibody. The lane on the left is treated with the antigen-specific peptide.