



[Go to Product page](#)

Datasheet for ABIN6264648
anti-RASGEF1B antibody (C-Term)

2 Images

Overview

Quantity:	100 µL
Target:	RASGEF1B
Binding Specificity:	C-Term
Reactivity:	Human, Mouse, Rat
Host:	Rabbit
Clonality:	Polyclonal
Conjugate:	This RASGEF1B antibody is un-conjugated
Application:	ELISA, Western Blotting (WB)

Product Details

Immunogen:	A synthesized peptide derived from human RASGEF1B, corresponding to a region within C-terminal amino acids.
Isotype:	IgG
Specificity:	RASGEF1B Antibody detects endogenous levels of total RASGEF1B.
Predicted Reactivity:	Pig,Bovine,Horse,Sheep,Rabbit,Dog,Xenopus
Purification:	The antiserum was purified by peptide affinity chromatography using SulfoLink™ Coupling Resin (Thermo Fisher Scientific).

Target Details

Target:	RASGEF1B
---------	----------

Target Details

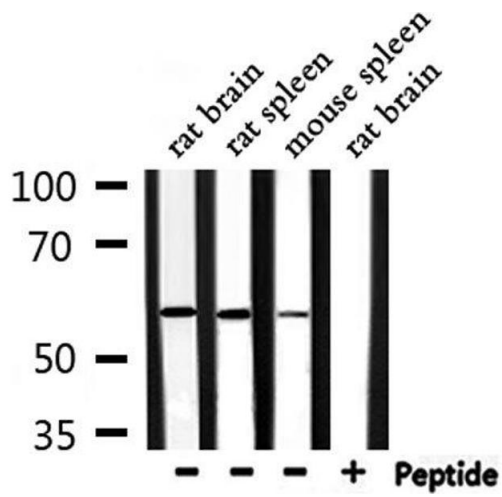
Alternative Name:	RASGEF1B (RASGEF1B Products)
Background:	Description: Guanine nucleotide exchange factor (GEF) with specificity for RAP2A, it doesn't seem to activate other Ras family proteins (in vitro). Gene: RASGEF1B
Molecular Weight:	55 kDa
Gene ID:	153020
UniProt:	Q0VAM2

Application Details

Application Notes:	WB 1:1000-3000, ELISA(peptide) 1:20000-1:40000
Restrictions:	For Research Use only

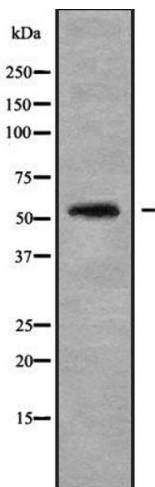
Handling

Format:	Liquid
Concentration:	1 mg/mL
Buffer:	Rabbit IgG in phosphate buffered saline , pH 7.4, 150 mM NaCl, 0.02 % sodium azide and 50 % glycerol.
Preservative:	Sodium azide
Precaution of Use:	This product contains Sodium azide: a POISONOUS AND HAZARDOUS SUBSTANCE which should be handled by trained staff only.
Storage:	-20 °C
Storage Comment:	Store at -20 °C. Stable for 12 months from date of receipt.
Expiry Date:	12 months



Western Blotting

Image 1. Western blot analysis of extracts from rat brain, rat spleen, mouse spleen, using RASGEF1B Antibody.



Western Blotting

Image 2. Western blot analysis of RASGEF1B using COLO205 whole cell lysates