

Datasheet for ABIN6264655

anti-RASSF2 antibody (Internal Region)

3 Images

1 Publication

[Go to Product page](#)

Overview

Quantity:	100 µL
Target:	RASSF2
Binding Specificity:	Internal Region
Reactivity:	Human, Mouse, Rat
Host:	Rabbit
Clonality:	Polyclonal
Conjugate:	This RASSF2 antibody is un-conjugated
Application:	Western Blotting (WB), ELISA, Immunocytochemistry (ICC), Immunofluorescence (IF), Immunohistochemistry (IHC)

Product Details

Immunogen:	A synthesized peptide derived from human RASSF2, corresponding to a region within the internal amino acids.
Isotype:	IgG
Specificity:	RASSF2 Antibody detects endogenous levels of total RASSF2.
Predicted Reactivity:	Pig,Horse,Sheep,Rabbit,Dog,Xenopus
Purification:	The antiserum was purified by peptide affinity chromatography using SulfoLink™ Coupling Resin (Thermo Fisher Scientific).

Target Details

Target:	RASSF2
---------	--------

Target Details

Alternative Name:	RASSF2 (RASSF2 Products)
Background:	Description: Potential tumor suppressor. Acts as a KRAS-specific effector protein. May promote apoptosis and cell cycle arrest. Stabilizes STK3/MST2 by protecting it from proteasomal degradation. Gene: RASSF2
Molecular Weight:	37 kDa
Gene ID:	9770
UniProt:	P50749

Application Details

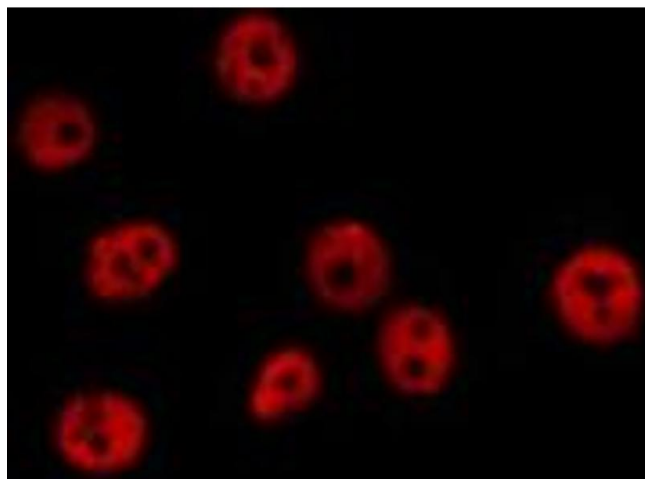
Application Notes:	WB 1:1000-3000, IHC 1:200, IF/ICC 1:100-1:500, ELISA(peptide) 1:20000-1:40000
Restrictions:	For Research Use only

Handling

Format:	Liquid
Concentration:	1 mg/mL
Buffer:	Rabbit IgG in phosphate buffered saline , pH 7.4, 150 mM NaCl, 0.02 % sodium azide and 50 % glycerol.
Preservative:	Sodium azide
Precaution of Use:	This product contains Sodium azide: a POISONOUS AND HAZARDOUS SUBSTANCE which should be handled by trained staff only.
Storage:	-20 °C
Storage Comment:	Store at -20 °C. Stable for 12 months from date of receipt.
Expiry Date:	12 months

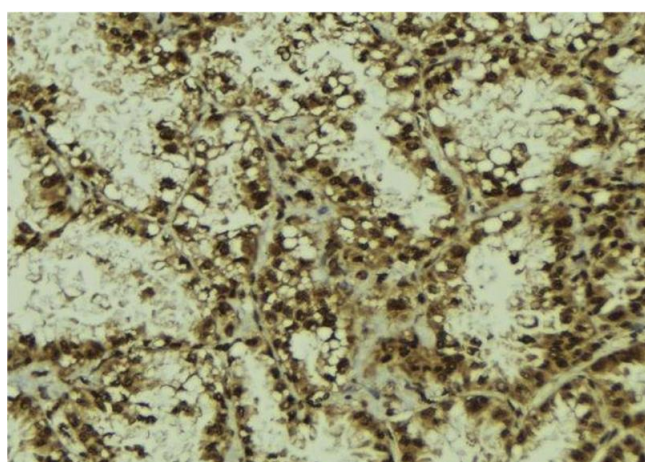
Publications

Product cited in:	Li, Zhao, Huang, Wang, Zhu, Cao, Xiong, Deng: "MiR-93-5p promotes gastric cancer-cell progression via inactivation of the Hippo signaling pathway." in: Gene , Vol. 641, pp. 240-247, (2017) (PubMed).
-------------------	---



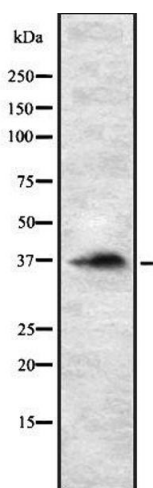
Immunofluorescence (fixed cells)

Image 1. ABIN6278396 staining Hela cells by IF/ICC. The sample were fixed with PFA and permeabilized in 0.1% Triton X-100, then blocked in 10% serum for 45 minutes at 25°C. The primary antibody was diluted at 1/200 and incubated with the sample for 1 hour at 37°C. An Alexa Fluor 594 conjugated goat anti-rabbit IgG (H+L) antibody (Cat.# S0006), diluted at 1/600, was used as secondary antibody



Immunohistochemistry

Image 2. ABIN6278396 at 1/100 staining Human lung tissue by IHC-P. The sample was formaldehyde fixed and a heat mediated antigen retrieval step in citrate buffer was performed. The sample was then blocked and incubated with the antibody for 1.5 hours at 22°C. An HRP conjugated goat anti-rabbit antibody was used as the secondary



Western Blotting

Image 3. Western blot analysis of RASSF2 using HepG2 whole cell lysates