

Datasheet for ABIN6264657

**anti-RASSF4 antibody (Internal Region)**[Go to Product page](#)**2** Images

## Overview

Quantity:	100 µL
Target:	RASSF4
Binding Specificity:	Internal Region
Reactivity:	Human, Rat
Host:	Rabbit
Clonality:	Polyclonal
Conjugate:	This RASSF4 antibody is un-conjugated
Application:	ELISA, Western Blotting (WB), Immunofluorescence (IF), Immunocytochemistry (ICC)

## Product Details

Immunogen:	A synthesized peptide derived from human RASSF4, corresponding to a region within the internal amino acids.
Isotype:	IgG
Specificity:	RASSF4 Antibody detects endogenous levels of total RASSF4.
Predicted Reactivity:	Pig,Bovine,Horse,Sheep,Rabbit,Dog
Purification:	The antiserum was purified by peptide affinity chromatography using SulfoLink™ Coupling Resin (Thermo Fisher Scientific).

## Target Details

Target:	RASSF4
---------	--------

## Target Details

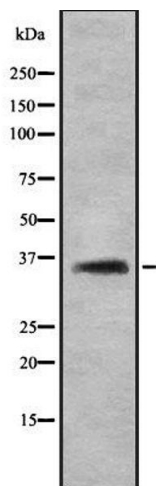
Alternative Name:	RASSF4 ( <a href="#">RASSF4 Products</a> )
Background:	Description: Potential tumor suppressor. May act as a KRAS effector protein. May promote apoptosis and cell cycle arrest. Gene: RASSF4
Molecular Weight:	36 kDa
Gene ID:	83937
UniProt:	<a href="#">Q9H2L5</a>

## Application Details

Application Notes:	WB 1:1000-3000, IF/ICC 1:100-1:500, ELISA(peptide) 1:20000-1:40000
Restrictions:	For Research Use only

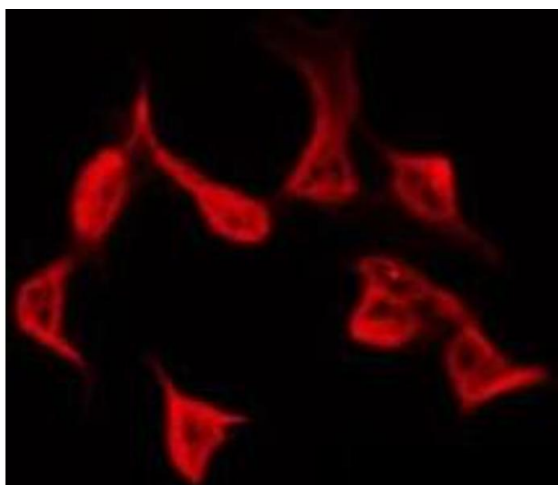
## Handling

Format:	Liquid
Concentration:	1 mg/mL
Buffer:	Rabbit IgG in phosphate buffered saline , pH 7.4, 150 mM NaCl, 0.02 % sodium azide and 50 % glycerol.
Preservative:	Sodium azide
Precaution of Use:	This product contains Sodium azide: a POISONOUS AND HAZARDOUS SUBSTANCE which should be handled by trained staff only.
Storage:	-20 °C
Storage Comment:	Store at -20 °C. Stable for 12 months from date of receipt.
Expiry Date:	12 months



### Western Blotting

**Image 1.** Western blot analysis of RASSF4 using Jurkat whole cell lysates



### Immunofluorescence (fixed cells)

**Image 2.** ABIN6278625 staining COLO205 by IF/ICC. The sample were fixed with PFA and permeabilized in 0.1% Triton X-100, then blocked in 10% serum for 45 minutes at 25°C. The primary antibody was diluted at 1/200 and incubated with the sample for 1 hour at 37°C. An Alexa Fluor 594 conjugated goat anti-rabbit IgG (H+L) Ab, diluted at 1/600, was used as the secondary antibody