

Datasheet for ABIN6264661

**anti-Retinoblastoma Binding Protein 4 antibody (C-Term)**[Go to Product page](#)**2** Images

## Overview

Quantity:	100 µL
Target:	Retinoblastoma Binding Protein 4 (RBBP4)
Binding Specificity:	C-Term
Reactivity:	Human, Mouse, Rat
Host:	Rabbit
Clonality:	Polyclonal
Conjugate:	This Retinoblastoma Binding Protein 4 antibody is un-conjugated
Application:	Western Blotting (WB), Immunohistochemistry (IHC), ELISA

## Product Details

Immunogen:	A synthesized peptide derived from human RBBP4, corresponding to a region within C-terminal amino acids.
Isotype:	IgG
Specificity:	RBBP4 Antibody detects endogenous levels of total RBBP4.
Predicted Reactivity:	Pig,Bovine,Horse,Sheep,Dog,Chicken
Purification:	The antiserum was purified by peptide affinity chromatography using SulfoLink™ Coupling Resin (Thermo Fisher Scientific).

## Target Details

Target:	Retinoblastoma Binding Protein 4 (RBBP4)
---------	--

## Target Details

Alternative Name:	RBBP4 ( <a href="#">RBBP4 Products</a> )
Background:	<p>Description: Core histone-binding subunit that may target chromatin assembly factors, chromatin remodeling factors and histone deacetylases to their histone substrates in a manner that is regulated by nucleosomal DNA. Component of several complexes which regulate chromatin metabolism. These include the chromatin assembly factor 1 (CAF-1) complex, which is required for chromatin assembly following DNA replication and DNA repair, the core histone deacetylase (HDAC) complex, which promotes histone deacetylation and consequent transcriptional repression, the nucleosome remodeling and histone deacetylase complex (the NuRD complex), which promotes transcriptional repression by histone deacetylation and nucleosome remodeling, the PRC2/EED-EZH2 complex, which promotes repression of homeotic genes during development, and the NURF (nucleosome remodeling factor) complex.</p> <p>Gene: RBBP4</p>
Molecular Weight:	48kDa
Gene ID:	5928
UniProt:	<a href="#">Q09028</a>
Pathways:	<a href="#">Cell Division Cycle</a> , <a href="#">Mitotic G1-G1/S Phases</a> , <a href="#">Stem Cell Maintenance</a> , <a href="#">Chromatin Binding</a> , <a href="#">Protein targeting to Nucleus</a>

## Application Details

Application Notes:	WB 1:500-1:2000, IHC 1:50-1:200, ELISA(peptide) 1:20000-1:40000
Restrictions:	For Research Use only

## Handling

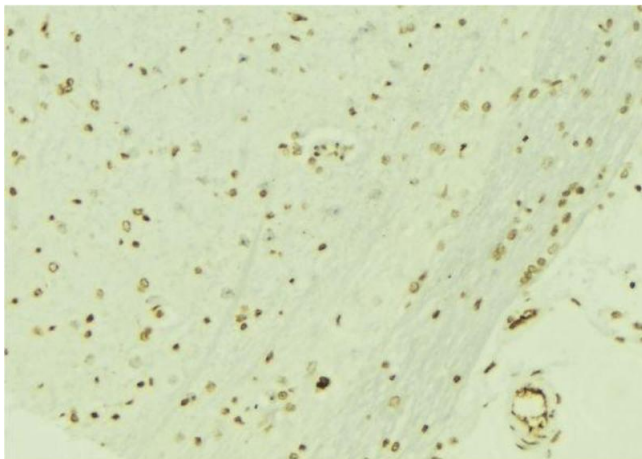
Format:	Liquid
Concentration:	1 mg/mL
Buffer:	Rabbit IgG in phosphate buffered saline , pH 7.4, 150 mM NaCl, 0.02 % sodium azide and 50 % glycerol.
Preservative:	Sodium azide
Precaution of Use:	This product contains Sodium azide: a POISONOUS AND HAZARDOUS SUBSTANCE which should be handled by trained staff only.
Storage:	-20 °C

## Handling

Storage Comment: Store at -20 °C. Stable for 12 months from date of receipt.

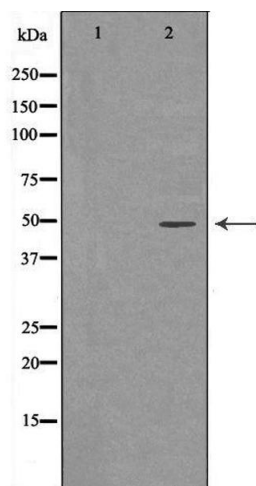
Expiry Date: 12 months

## Images



### Immunohistochemistry

**Image 1.** ABIN6276692 at 1/100 staining Mouse brain tissue by IHC-P. The sample was formaldehyde fixed and a heat mediated antigen retrieval step in citrate buffer was performed. The sample was then blocked and incubated with the antibody for 1.5 hours at 22°C. An HRP conjugated goat anti-rabbit antibody was used as the secondary



### Western Blotting

**Image 2.** Western blot analysis of HeLa whole cell lysates, using RBBP4 Antibody. The lane on the left is treated with the antigen-specific peptide.