

Datasheet for ABIN6264666
anti-p130 antibody (C-Term)[Go to Product page](#)

1 Image

Overview

Quantity:	100 µL
Target:	p130 (RBL2)
Binding Specificity:	C-Term
Reactivity:	Human, Rat
Host:	Rabbit
Clonality:	Polyclonal
Conjugate:	This p130 antibody is un-conjugated
Application:	ELISA, Western Blotting (WB)

Product Details

Immunogen:	A synthesized peptide derived from human RBL2, corresponding to a region within C-terminal amino acids.
Isotype:	IgG
Specificity:	RBL2 Antibody detects endogenous levels of total RBL2.
Predicted Reactivity:	Pig,Bovine,Horse,Sheep,Rabbit,Dog
Purification:	The antiserum was purified by peptide affinity chromatography using SulfoLink™ Coupling Resin (Thermo Fisher Scientific).

Target Details

Target:	p130 (RBL2)
---------	-------------

Target Details

Alternative Name:	RBL2 (RBL2 Products)
Background:	<p>Description: Key regulator of entry into cell division. Directly involved in heterochromatin formation by maintaining overall chromatin structure and, in particular, that of constitutive heterochromatin by stabilizing histone methylation. Recruits and targets histone methyltransferases KMT5B and KMT5C, leading to epigenetic transcriptional repression. Controls histone H4 'Lys-20' trimethylation. Probably acts as a transcription repressor by recruiting chromatin-modifying enzymes to promoters. Potent inhibitor of E2F-mediated trans-activation, associates preferentially with E2F5. Binds to cyclins A and E. Binds to and may be involved in the transforming capacity of the adenovirus E1A protein. May act as a tumor suppressor.</p> <p>Gene: RBL2</p>
Molecular Weight:	128kDa
Gene ID:	5934
UniProt:	Q08999
Pathways:	Cell Division Cycle, Mitotic G1-G1/S Phases

Application Details

Application Notes:	WB 1:1000-3000, ELISA(peptide) 1:20000-1:40000
Restrictions:	For Research Use only

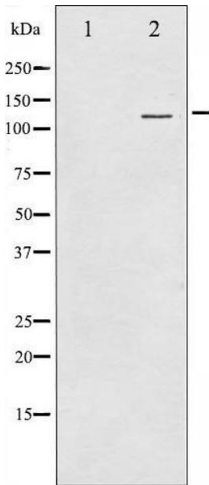
Handling

Format:	Liquid
Concentration:	1 mg/mL
Buffer:	Rabbit IgG in phosphate buffered saline , pH 7.4, 150 mM NaCl, 0.02 % sodium azide and 50 % glycerol.
Preservative:	Sodium azide
Precaution of Use:	This product contains Sodium azide: a POISONOUS AND HAZARDOUS SUBSTANCE which should be handled by trained staff only.
Storage:	-20 °C
Storage Comment:	Store at -20 °C. Stable for 12 months from date of receipt.

Handling

Expiry Date: 12 months

Images



Western Blotting

Image 1. Western blot analysis of RBL2 using MCF7 whole cell lysates