

Datasheet for ABIN6264667
anti-RBM15 antibody (N-Term)[Go to Product page](#)

3 Images

Overview

| | |
|----------------------|---|
| Quantity: | 100 µL |
| Target: | RBM15 |
| Binding Specificity: | N-Term |
| Reactivity: | Human, Mouse, Rat |
| Host: | Rabbit |
| Clonality: | Polyclonal |
| Conjugate: | This RBM15 antibody is un-conjugated |
| Application: | Western Blotting (WB), Immunohistochemistry (IHC) |

Product Details

| | |
|-----------------------|---|
| Immunogen: | A synthesized peptide derived from human RBM15, corresponding to a region within N-terminal amino acids. |
| Isotype: | IgG |
| Specificity: | RBM15 Antibody detects endogenous levels of total RBM15. |
| Predicted Reactivity: | Pig,Bovine,Horse,Sheep,Rabbit,Dog |
| Purification: | The antiserum was purified by peptide affinity chromatography using SulfoLink™ Coupling Resin (Thermo Fisher Scientific). |

Target Details

| | |
|---------|-------|
| Target: | RBM15 |
|---------|-------|

Target Details

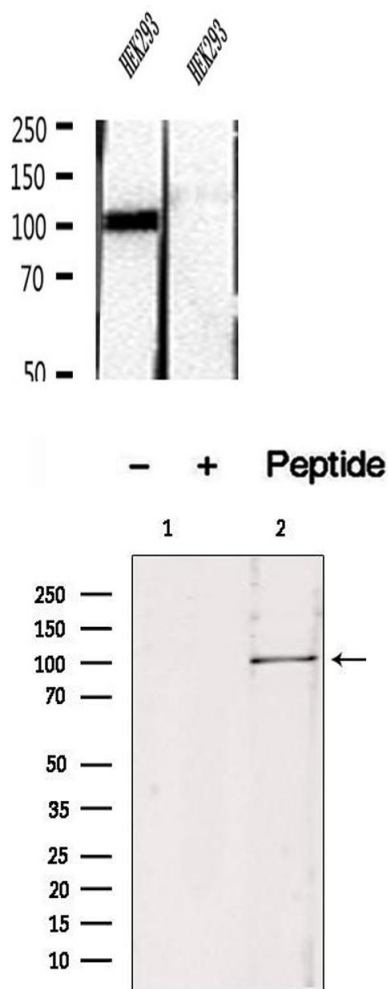
| | |
|-------------------|---|
| Alternative Name: | RBM15 (RBM15 Products) |
| Background: | <p>Description: May function as an mRNA export factor, stimulating export and expression of RTE-containing mRNAs which are present in many retrotransposons that require to be exported prior to splicing. High affinity binding of pre-mRNA to RBM15 may allow targeting of the mRNP to the export helicase DBP5 in a manner that is independent of splicing-mediated NXF1 deposition, resulting in export prior to splicing. May be implicated in HOX gene regulation.</p> <p>Gene: RBM15</p> |
| Molecular Weight: | 100-107 kDa |
| Gene ID: | 64783 |
| UniProt: | Q96T37 |

Application Details

| | |
|--------------------|---------------------------------|
| Application Notes: | WB 1:500-1:2000, IHC 1:50-1:200 |
| Restrictions: | For Research Use only |

Handling

| | |
|--------------------|--|
| Format: | Liquid |
| Concentration: | 1 mg/mL |
| Buffer: | Rabbit IgG in phosphate buffered saline , pH 7.4, 150 mM NaCl, 0.02 % sodium azide and 50 % glycerol. |
| Preservative: | Sodium azide |
| Precaution of Use: | This product contains Sodium azide: a POISONOUS AND HAZARDOUS SUBSTANCE which should be handled by trained staff only. |
| Storage: | -20 °C |
| Storage Comment: | Store at -20 °C. Stable for 12 months from date of receipt. |
| Expiry Date: | 12 months |

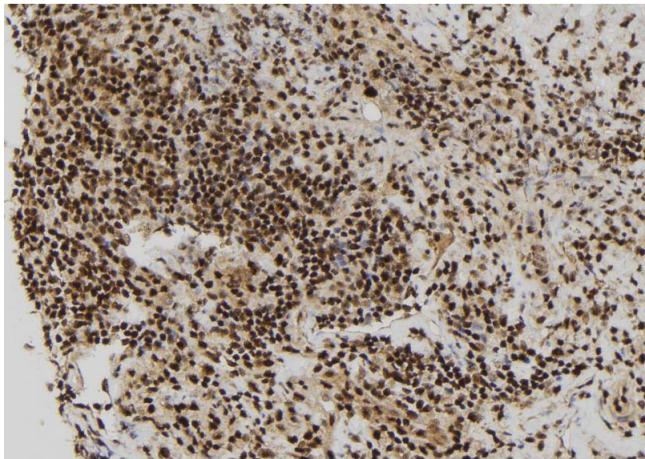


Western Blotting

Image 1. Western blot analysis of extracts of HEK293 cells, using RBM15 antibody.

Western Blotting

Image 2. Western blot analysis of extracts from 293, using RBM15 antibody. Lane 1 was treated with the blocking peptide.



Immunohistochemistry

Image 3. ABIN6272905 at 1/100 staining Human spleen tissue by IHC-P. The sample was formaldehyde fixed and a heat mediated antigen retrieval step in citrate buffer was performed. The sample was then blocked and incubated with the antibody for 1.5 hours at 22°C. An HRP conjugated goat anti-rabbit antibody was used as the secondary.