

Datasheet for ABIN6264695  
**anti-REM1 antibody (N-Term)**[Go to Product page](#)

## 2 Images

## Overview

Quantity:	100 µL
Target:	REM1
Binding Specificity:	N-Term
Reactivity:	Human
Host:	Rabbit
Clonality:	Polyclonal
Conjugate:	This REM1 antibody is un-conjugated
Application:	Western Blotting (WB), ELISA, Immunofluorescence (IF), Immunocytochemistry (ICC), Immunohistochemistry (IHC)

## Product Details

Immunogen:	A synthesized peptide derived from human REM1, corresponding to a region within N-terminal amino acids.
Isotype:	IgG
Specificity:	REM1 Antibody detects endogenous levels of total REM1.
Predicted Reactivity:	Pig,Bovine,Horse,Sheep,Rabbit,Dog
Purification:	The antiserum was purified by peptide affinity chromatography using SulfoLink™ Coupling Resin (Thermo Fisher Scientific).

## Target Details

Target:	REM1
---------	------

## Target Details

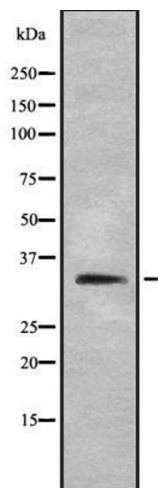
Alternative Name:	REM1 ( <a href="#">REM1 Products</a> )
Background:	Description: Promotes endothelial cell sprouting and actin cytoskeletal reorganization. May be involved in angiogenesis. May function in Ca <sup>2+</sup> signaling. Gene: REM1
Molecular Weight:	33 kDa
Gene ID:	28954
UniProt:	<a href="#">075628</a>

## Application Details

Application Notes:	WB 1:1000-3000, IF/ICC 1:200-1:500, IHC 1:50-1:200, ELISA(peptide) 1:20000-1:40000
Restrictions:	For Research Use only

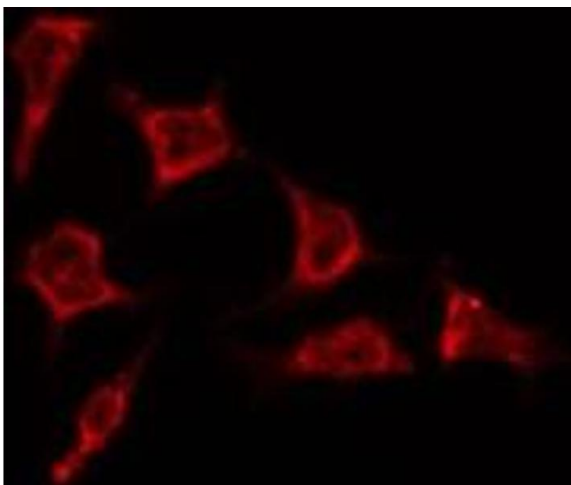
## Handling

Format:	Liquid
Concentration:	1 mg/mL
Buffer:	Rabbit IgG in phosphate buffered saline , pH 7.4, 150 mM NaCl, 0.02 % sodium azide and 50 % glycerol.
Preservative:	Sodium azide
Precaution of Use:	This product contains Sodium azide: a POISONOUS AND HAZARDOUS SUBSTANCE which should be handled by trained staff only.
Storage:	-20 °C
Storage Comment:	Store at -20 °C. Stable for 12 months from date of receipt.
Expiry Date:	12 months



#### Western Blotting

**Image 1.** Western blot analysis of REM1 using K562 whole cell lysates



#### Immunofluorescence (fixed cells)

**Image 2.** ABIN6278329 staining HepG2 by IF/ICC. The sample were fixed with PFA and permeabilized in 0.1% Triton X-100, then blocked in 10% serum for 45 minutes at 25°C. The primary antibody was diluted at 1/200 and incubated with the sample for 1 hour at 37°C. An Alexa Fluor 594 conjugated goat anti-rabbit IgG (H+L) Ab, diluted at 1/600, was used as the secondary antibody