

Datasheet for ABIN6264701
anti-REST antibody (C-Term)[Go to Product page](#)

1 Image

Overview

Quantity:	100 µL
Target:	REST
Binding Specificity:	C-Term
Reactivity:	Human, Rat
Host:	Rabbit
Clonality:	Polyclonal
Conjugate:	This REST antibody is un-conjugated
Application:	Western Blotting (WB), ELISA, Immunofluorescence (IF), Immunocytochemistry (ICC)

Product Details

Immunogen:	A synthesized peptide derived from human REST, corresponding to a region within C-terminal amino acids.
Isotype:	IgG
Specificity:	REST Antibody detects endogenous levels of total REST.
Predicted Reactivity:	Horse,Rabbit,Dog
Purification:	The antiserum was purified by peptide affinity chromatography using SulfoLink™ Coupling Resin (Thermo Fisher Scientific).

Target Details

Target:	REST
---------	------

Target Details

Alternative Name:	REST (REST Products)
Background:	<p>Description: Transcriptional repressor which binds neuron-restrictive silencer element (NRSE) and represses neuronal gene transcription in non-neuronal cells. Restricts the expression of neuronal genes by associating with two distinct corepressors, mSin3 and CoREST, which in turn recruit histone deacetylase to the promoters of REST-regulated genes. Mediates repression by recruiting the BHC complex at RE1/NRSE sites which acts by deacetylating and demethylating specific sites on histones, thereby acting as a chromatin modifier.</p> <p>Transcriptional repression by REST-CDYL via the recruitment of histone methyltransferase EHMT2 may be important in transformation suppression.</p> <p>Gene: REST</p>
Molecular Weight:	121 kDa
Gene ID:	5978
UniProt:	Q13127
Pathways:	Negative Regulation of Hormone Secretion , Regulation of Hormone Metabolic Process , Regulation of Hormone Biosynthetic Process , Chromatin Binding , Positive Regulation of Endopeptidase Activity

Application Details

Application Notes:	WB 1:1000-3000, IF/ICC 1:100-1:500, ELISA(peptide) 1:20000-1:40000
Restrictions:	For Research Use only

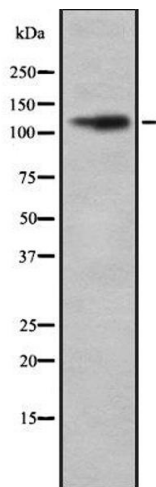
Handling

Format:	Liquid
Concentration:	1 mg/mL
Buffer:	Rabbit IgG in phosphate buffered saline , pH 7.4, 150 mM NaCl, 0.02 % sodium azide and 50 % glycerol.
Preservative:	Sodium azide
Precaution of Use:	This product contains Sodium azide: a POISONOUS AND HAZARDOUS SUBSTANCE which should be handled by trained staff only.
Storage:	-20 °C
Storage Comment:	Store at -20 °C. Stable for 12 months from date of receipt.

Handling

Expiry Date: 12 months

Images



Western Blotting

Image 1. Western blot analysis of REST using COLO205 whole lysates.