

Datasheet for ABIN6264711

**anti-RFC4 antibody**

3 Images

[Go to Product page](#)

## Overview

Quantity:	100 µL
Target:	RFC4
Reactivity:	Human, Rat, Mouse
Host:	Rabbit
Clonality:	Polyclonal
Conjugate:	This RFC4 antibody is un-conjugated
Application:	Western Blotting (WB), ELISA, Immunohistochemistry (IHC)

## Product Details

Immunogen:	A synthesized peptide derived from human RFC4
Isotype:	IgG
Specificity:	RFC4 Antibody detects endogenous levels of total RFC4
Cross-Reactivity:	Human, Mouse (Murine), Rat (Rattus)
Purification:	The antiserum was purified by peptide affinity chromatography using SulfoLink™ Coupling Resin (Thermo Fisher Scientific).

## Target Details

Target:	RFC4
Alternative Name:	RFC4 ( <a href="#">RFC4 Products</a> )
Background:	Description: The elongation of primed DNA templates by DNA polymerase delta and epsilon

## Target Details

requires the action of the accessory proteins proliferating cell nuclear antigen (PCNA) and activator 1. This subunit may be involved in the elongation of the multiprimed DNA template.  
Gene: RFC4

Molecular Weight: 39kDa

Gene ID: 5984

UniProt: [P35249](#)

Pathways: [Telomere Maintenance](#), [DNA Damage Repair](#), [DNA Replication](#), [Synthesis of DNA](#)

## Application Details

Application Notes: WB 1:500-1:2000 IHC 1:50-1:200

Restrictions: For Research Use only

## Handling

Format: Liquid

Concentration: 1 mg/mL

Buffer: Rabbit IgG in phosphate buffered saline , pH 7.4, 150 mM NaCl, 0.02 % sodium azide and 50 % glycerol.

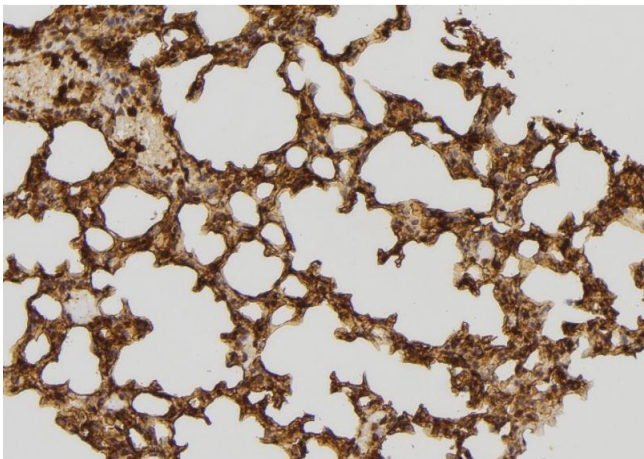
Preservative: Sodium azide

Precaution of Use: This product contains Sodium azide: a POISONOUS AND HAZARDOUS SUBSTANCE which should be handled by trained staff only.

Storage: -20 °C

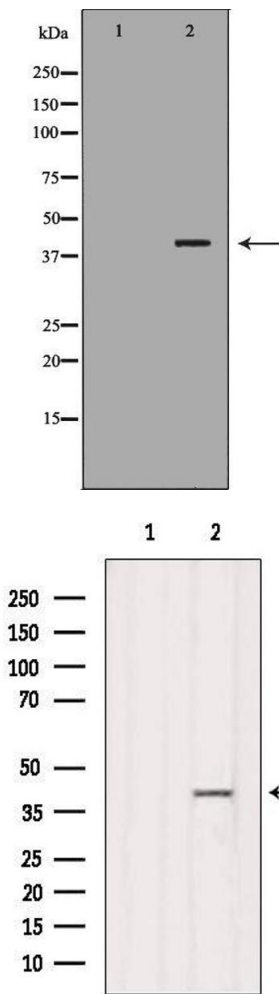
Storage Comment: Store at -20 °C.Stable for 12 months from date of receipt

Expiry Date: 12 months



Immunohistochemistry

**Image 1.** ABIN6277609 at 1/100 staining Mouse lung tissue by IHC-P. The sample was formaldehyde fixed and a heat mediated antigen retrieval step in citrate buffer was performed. The sample was then blocked and incubated with the antibody for 1.5 hours at 22°C. An HRP conjugated goat anti-rabbit antibody was used as the secondary



Western Blotting

**Image 2.** Western blot analysis of Hela whole cell lysates, using RFC4 Antibody. The lane on the left is treated with the antigen-specific peptide.

Western Blotting

**Image 3.** Western blot analysis of extracts from COS-7, using RFC4 Antibody. The lane on the left was treated with blocking peptide.