



[Go to Product page](#)

Datasheet for ABIN6264713

anti-RFPL2 antibody

2 Images

Overview

Quantity:	100 µL
Target:	RFPL2
Reactivity:	Human, Rat, Mouse
Host:	Rabbit
Clonality:	Polyclonal
Conjugate:	This RFPL2 antibody is un-conjugated
Application:	Western Blotting (WB), ELISA, Immunohistochemistry (IHC)

Product Details

Immunogen:	A synthesized peptide derived from human RFPL2
Isotype:	IgG
Specificity:	RFPL2 Antibody detects endogenous levels of total RFPL2
Cross-Reactivity:	Human, Mouse (Murine), Rat (Rattus)
Purification:	The antiserum was purified by peptide affinity chromatography using SulfoLink™ Coupling Resin (Thermo Fisher Scientific).

Target Details

Target:	RFPL2
Alternative Name:	RFPL2 (RFPL2 Products)
Background:	Gene: RFPL2

Target Details

Molecular Weight:	42 kDa
Gene ID:	10739
UniProt:	O75678

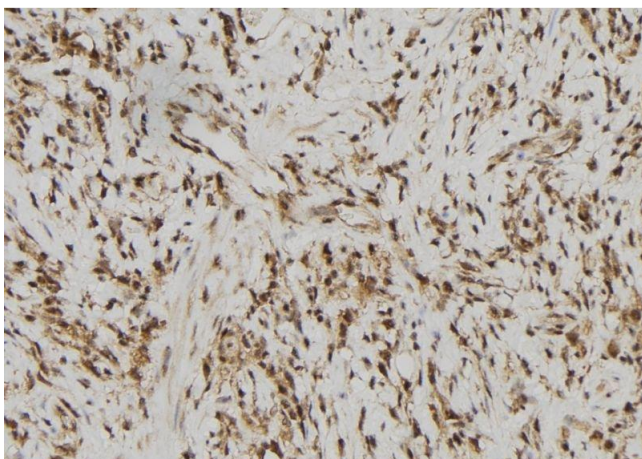
Application Details

Application Notes:	WB 1:1000-3000 IHC 1:200
Restrictions:	For Research Use only

Handling

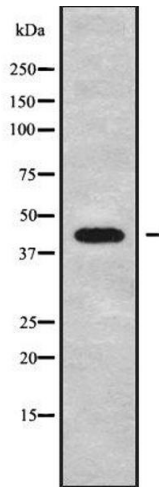
Format:	Liquid
Concentration:	1 mg/mL
Buffer:	Rabbit IgG in phosphate buffered saline , pH 7.4, 150 mM NaCl, 0.02 % sodium azide and 50 % glycerol.
Preservative:	Sodium azide
Precaution of Use:	This product contains Sodium azide: a POISONOUS AND HAZARDOUS SUBSTANCE which should be handled by trained staff only.
Storage:	-20 °C
Storage Comment:	Store at -20 °C.Stable for 12 months from date of receipt
Expiry Date:	12 months

Images



Immunohistochemistry

Image 1. ABIN6279761 at 1/100 staining Human gastric tissue by IHC-P. The sample was formaldehyde fixed and a heat mediated antigen retrieval step in citrate buffer was performed. The sample was then blocked and incubated with the antibody for 1.5 hours at 22;ãC. An HRP conjugated goat anti-rabbit antibody was used as the secondary



Western Blotting

Image 2. Western blot analysis of RFPL2 using HuvEc whole cell lysates