



[Go to Product page](#)

Datasheet for ABIN6264725

anti-RGS21 antibody (N-Term)

2 Images

Overview

| | |
|----------------------|--|
| Quantity: | 100 µL |
| Target: | RGS21 |
| Binding Specificity: | N-Term |
| Reactivity: | Human, Mouse, Rat |
| Host: | Rabbit |
| Clonality: | Polyclonal |
| Conjugate: | This RGS21 antibody is un-conjugated |
| Application: | Western Blotting (WB), ELISA, Immunohistochemistry (IHC) |

Product Details

| | |
|-----------------------|---|
| Immunogen: | A synthesized peptide derived from human RGS21, corresponding to a region within N-terminal amino acids. |
| Isotype: | IgG |
| Specificity: | RGS21 Antibody detects endogenous levels of total RGS21. |
| Predicted Reactivity: | Pig,Bovine,Horse,Sheep,Rabbit,Dog |
| Purification: | The antiserum was purified by peptide affinity chromatography using SulfoLink™ Coupling Resin (Thermo Fisher Scientific). |

Target Details

| | |
|---------|-------|
| Target: | RGS21 |
|---------|-------|

Target Details

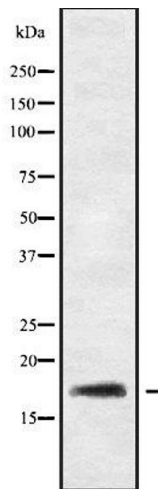
| | |
|-------------------|---|
| Alternative Name: | RGS21 (RGS21 Products) |
| Background: | Description: Inhibits signal transduction by increasing the GTPase activity of G protein alpha subunits thereby driving them into their inactive GDP-bound form. Gene: RGS21 |
| Molecular Weight: | 18 kDa |
| Gene ID: | 431704 |
| UniProt: | Q2M5E4 |
| Pathways: | Regulation of G-Protein Coupled Receptor Protein Signaling |

Application Details

| | |
|--------------------|---|
| Application Notes: | WB 1:1000-3000, IHC 1:200, ELISA(peptide) 1:20000-1:40000 |
| Restrictions: | For Research Use only |

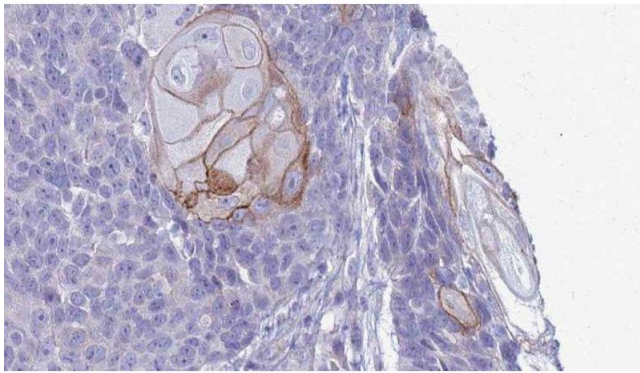
Handling

| | |
|--------------------|--|
| Format: | Liquid |
| Concentration: | 1 mg/mL |
| Buffer: | Rabbit IgG in phosphate buffered saline , pH 7.4, 150 mM NaCl, 0.02 % sodium azide and 50 % glycerol. |
| Preservative: | Sodium azide |
| Precaution of Use: | This product contains Sodium azide: a POISONOUS AND HAZARDOUS SUBSTANCE which should be handled by trained staff only. |
| Storage: | -20 °C |
| Storage Comment: | Store at -20 °C. Stable for 12 months from date of receipt. |
| Expiry Date: | 12 months |



Western Blotting

Image 1. Western blot analysis of RGS21 using HeLa whole cell lysates



Immunohistochemistry

Image 2. ABIN6279758 at 1/100 staining Human Head and neck cancer tissue by IHC-P. The sample was formaldehyde fixed and a heat mediated antigen retrieval step in citrate buffer was performed. The sample was then blocked and incubated with the antibody for 1.5 hours at 22°C. An HRP conjugated goat anti-rabbit antibody was used as the secondary