



Datasheet for ABIN6264735
anti-ARHGAP24 antibody (Internal Region)



[Go to Product page](#)

1 Image

Overview

| | |
|----------------------|--|
| Quantity: | 100 µL |
| Target: | ARHGAP24 |
| Binding Specificity: | Internal Region |
| Reactivity: | Human, Mouse, Rat |
| Host: | Rabbit |
| Clonality: | Polyclonal |
| Conjugate: | This ARHGAP24 antibody is un-conjugated |
| Application: | Western Blotting (WB), ELISA, Immunohistochemistry (IHC) |

Product Details

| | |
|-----------------------|---|
| Immunogen: | A synthesized peptide derived from human RHG24, corresponding to a region within the internal amino acids. |
| Isotype: | IgG |
| Specificity: | RHG24 Antibody detects endogenous levels of total RHG24. |
| Predicted Reactivity: | Bovine,Horse,Sheep,Rabbit,Dog |
| Purification: | The antiserum was purified by peptide affinity chromatography using SulfoLink™ Coupling Resin (Thermo Fisher Scientific). |

Target Details

| | |
|---------|----------|
| Target: | ARHGAP24 |
|---------|----------|

Target Details

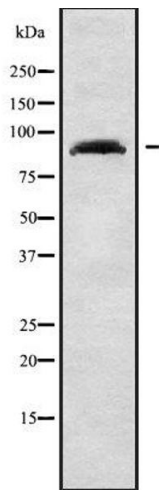
| | |
|-------------------|---|
| Alternative Name: | ARHGAP24 (ARHGAP24 Products) |
| Background: | <p>Description: Rho GTPase-activating protein involved in cell polarity, cell morphology and cytoskeletal organization. Acts as a GTPase activator for the Rac-type GTPase by converting it to an inactive GDP-bound state. Controls actin remodeling by inactivating Rac downstream of Rho leading to suppress leading edge protrusion and promotes cell retraction to achieve cellular polarity. Able to suppress RAC1 and CDC42 activity in vitro. Overexpression induces cell rounding with partial or complete disruption of actin stress fibers and formation of membrane ruffles, lamellipodia, and filopodia. Isoform 2 is a vascular cell-specific GAP involved in modulation of angiogenesis.</p> <p>Gene: ARHGAP24</p> |
| Molecular Weight: | 84 kDa |
| Gene ID: | 83478 |
| UniProt: | Q8N264 |
| Pathways: | Regulation of Cell Size , Positive Regulation of Response to DNA Damage Stimulus |

Application Details

| | |
|--------------------|--|
| Application Notes: | WB 1:1000-3000, IHC 1:50-1:200, ELISA(peptide) 1:20000-1:40000 |
| Restrictions: | For Research Use only |

Handling

| | |
|--------------------|--|
| Format: | Liquid |
| Concentration: | 1 mg/mL |
| Buffer: | Rabbit IgG in phosphate buffered saline , pH 7.4, 150 mM NaCl, 0.02 % sodium azide and 50 % glycerol. |
| Preservative: | Sodium azide |
| Precaution of Use: | This product contains Sodium azide: a POISONOUS AND HAZARDOUS SUBSTANCE which should be handled by trained staff only. |
| Storage: | -20 °C |
| Storage Comment: | Store at -20 °C. Stable for 12 months from date of receipt. |
| Expiry Date: | 12 months |



Western Blotting

Image 1. Western blot analysis of RHG24 using A549 whole cell lysates