



Datasheet for ABIN6264736  
**anti-ARHGAP25 antibody (Internal Region)**



[Go to Product page](#)

2 Images

Overview

Quantity:	100 µL
Target:	ARHGAP25
Binding Specificity:	Internal Region
Reactivity:	Human, Mouse, Rat
Host:	Rabbit
Clonality:	Polyclonal
Conjugate:	This ARHGAP25 antibody is un-conjugated
Application:	Western Blotting (WB), ELISA, Immunofluorescence (IF), Immunocytochemistry (ICC)

Product Details

Immunogen:	A synthesized peptide derived from human RHG25, corresponding to a region within the internal amino acids.
Isotype:	IgG
Specificity:	RHG25 Antibody detects endogenous levels of total RHG25.
Predicted Reactivity:	Horse,Rabbit
Purification:	The antiserum was purified by peptide affinity chromatography using SulfoLink™ Coupling Resin (Thermo Fisher Scientific).

Target Details

Target:	ARHGAP25
---------	----------

## Target Details

---

Alternative Name:	ARHGAP25 ( <a href="#">ARHGAP25 Products</a> )
Background:	Description: GTPase activator for the Rho-type GTPases by converting them to an inactive GDP-bound state. Gene: ARHGAP25
Molecular Weight:	73 kDa
Gene ID:	9938
UniProt:	<a href="#">P42331</a>

## Application Details

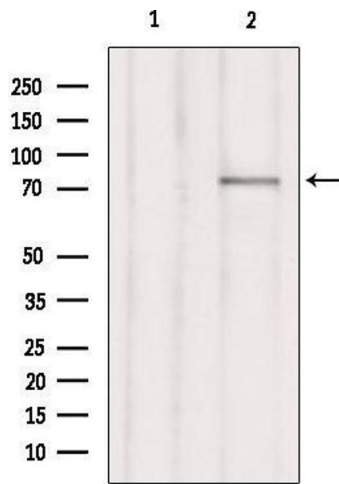
---

Application Notes:	WB 1:1000-3000, IF/ICC 1:100-1:500, ELISA(peptide) 1:20000-1:40000
Restrictions:	For Research Use only

## Handling

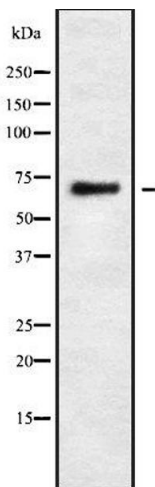
---

Format:	Liquid
Concentration:	1 mg/mL
Buffer:	Rabbit IgG in phosphate buffered saline , pH 7.4, 150 mM NaCl, 0.02 % sodium azide and 50 % glycerol.
Preservative:	Sodium azide
Precaution of Use:	This product contains Sodium azide: a POISONOUS AND HAZARDOUS SUBSTANCE which should be handled by trained staff only.
Storage:	-20 °C
Storage Comment:	Store at -20 °C. Stable for 12 months from date of receipt.
Expiry Date:	12 months



### Western Blotting

**Image 1.** Western blot analysis of extracts from Hepg2, using RHG25 Antibody. Lane 1 was treated with the blocking peptide.



### Western Blotting

**Image 2.** Western blot analysis of RHG25 using LOVO whole cell lysates