



[Go to Product page](#)

Datasheet for ABIN6264738

## anti-ARHGAP30 antibody (Internal Region)

### 1 Image

#### Overview

Quantity:	100 µL
Target:	ARHGAP30
Binding Specificity:	Internal Region
Reactivity:	Human, Mouse, Rat
Host:	Rabbit
Clonality:	Polyclonal
Conjugate:	This ARHGAP30 antibody is un-conjugated
Application:	Western Blotting (WB), ELISA, Immunohistochemistry (IHC)

#### Product Details

Immunogen:	A synthesized peptide derived from human RHG30, corresponding to a region within the internal amino acids.
Isotype:	IgG
Specificity:	RHG30 Antibody detects endogenous levels of total RHG30.
Predicted Reactivity:	Pig,Bovine,Horse,Sheep,Rabbit,Dog
Purification:	The antiserum was purified by peptide affinity chromatography using SulfoLink™ Coupling Resin (Thermo Fisher Scientific).

#### Target Details

Target:	ARHGAP30
---------	----------

## Target Details

---

Alternative Name:	ARHGAP30 ( <a href="#">ARHGAP30 Products</a> )
Background:	Description: GTPase-activating protein (GAP) for RAC1 and RHOA, but not for CDC42. Gene: ARHGAP30
Molecular Weight:	119 kDa
Gene ID:	257106
UniProt:	<a href="#">Q7Z6I6</a>

## Application Details

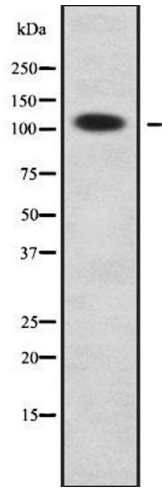
---

Application Notes:	WB 1:1000-3000, IHC 1:50-1:200, ELISA(peptide) 1:20000-1:40000
Restrictions:	For Research Use only

## Handling

---

Format:	Liquid
Concentration:	1 mg/mL
Buffer:	Rabbit IgG in phosphate buffered saline , pH 7.4, 150 mM NaCl, 0.02 % sodium azide and 50 % glycerol.
Preservative:	Sodium azide
Precaution of Use:	This product contains Sodium azide: a POISONOUS AND HAZARDOUS SUBSTANCE which should be handled by trained staff only.
Storage:	-20 °C
Storage Comment:	Store at -20 °C. Stable for 12 months from date of receipt.
Expiry Date:	12 months



### Western Blotting

**Image 1.** Western blot analysis of RHG30 using COLO205 whole cell lysates