



[Go to Product page](#)

Datasheet for ABIN6264740

anti-ARHGAP6 antibody (Internal Region)

1 Image

Overview

Quantity:	100 µL
Target:	ARHGAP6
Binding Specificity:	Internal Region
Reactivity:	Human, Mouse, Rat
Host:	Rabbit
Clonality:	Polyclonal
Conjugate:	This ARHGAP6 antibody is un-conjugated
Application:	Western Blotting (WB), ELISA

Product Details

Immunogen:	A synthesized peptide derived from human RHG6, corresponding to a region within the internal amino acids.
Isotype:	IgG
Specificity:	RHG6 Antibody detects endogenous levels of total RHG6.
Purification:	The antiserum was purified by peptide affinity chromatography using SulfoLink™ Coupling Resin (Thermo Fisher Scientific).

Target Details

Target:	ARHGAP6
Alternative Name:	ARHGAP6 (ARHGAP6 Products)

Target Details

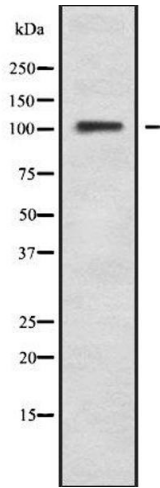
Background:	Description: GTPase activator for the Rho-type GTPases by converting them to an inactive GDP-bound state. Could regulate the interactions of signaling molecules with the actin cytoskeleton. Promotes continuous elongation of cytoplasmic processes during cell motility and simultaneous retraction of the cell body changing the cell morphology. Gene: ARHGAP6
Molecular Weight:	106 kDa
Gene ID:	395
UniProt:	O43182
Pathways:	Cell-Cell Junction Organization

Application Details

Application Notes:	WB 1:1000-3000, ELISA(peptide) 1:20000-1:40000
Restrictions:	For Research Use only

Handling

Format:	Liquid
Concentration:	1 mg/mL
Buffer:	Rabbit IgG in phosphate buffered saline , pH 7.4, 150 mM NaCl, 0.02 % sodium azide and 50 % glycerol.
Preservative:	Sodium azide
Precaution of Use:	This product contains Sodium azide: a POISONOUS AND HAZARDOUS SUBSTANCE which should be handled by trained staff only.
Storage:	-20 °C
Storage Comment:	Store at -20 °C. Stable for 12 months from date of receipt.
Expiry Date:	12 months



Western Blotting

Image 1. Western blot analysis of RHG6 using NIH-3T3 whole cell lysates