

Datasheet for ABIN6264746
anti-RHOC antibody (C-Term)[Go to Product page](#)

3 Images

Overview

Quantity:	100 µL
Target:	RHOC
Binding Specificity:	C-Term
Reactivity:	Human, Mouse, Rat
Host:	Rabbit
Clonality:	Polyclonal
Conjugate:	This RHOC antibody is un-conjugated
Application:	Western Blotting (WB), ELISA, Immunohistochemistry (IHC)

Product Details

Immunogen:	A synthesized peptide derived from human RHOC, corresponding to a region within C-terminal amino acids.
Isotype:	IgG
Specificity:	RHOC Antibody detects endogenous levels of total RHOC.
Predicted Reactivity:	Pig,Bovine,Horse,Dog,Chicken
Purification:	The antiserum was purified by peptide affinity chromatography using SulfoLink™ Coupling Resin (Thermo Fisher Scientific).

Target Details

Target:	RHOC
---------	------

Target Details

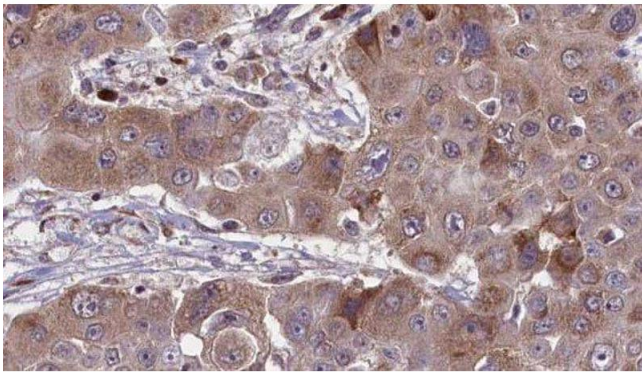
Alternative Name:	RHOC (RHOC Products)
Background:	<p>Description: Regulates a signal transduction pathway linking plasma membrane receptors to the assembly of focal adhesions and actin stress fibers. Serves as a microtubule-dependent signal that is required for the myosin contractile ring formation during cell cycle cytokinesis. Regulates apical junction formation in bronchial epithelial cells.</p> <p>Gene: RHOC</p>
Molecular Weight:	22kDa
Gene ID:	389
UniProt:	P08134
Pathways:	WNT Signaling, Cell-Cell Junction Organization

Application Details

Application Notes:	WB 1:500-1:2000, IHC 1:50-1:200, ELISA(peptide) 1:20000-1:40000
Restrictions:	For Research Use only

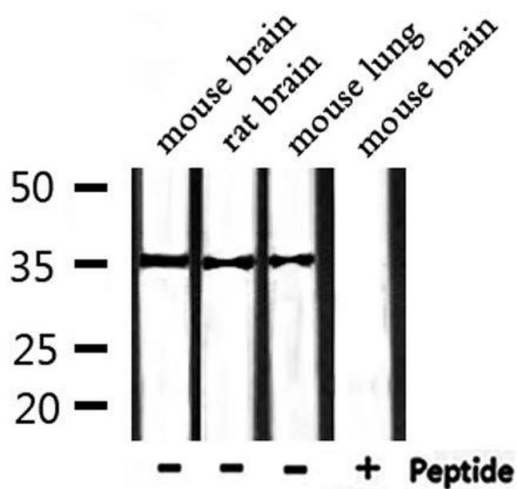
Handling

Format:	Liquid
Concentration:	1 mg/mL
Buffer:	Rabbit IgG in phosphate buffered saline , pH 7.4, 150 mM NaCl, 0.02 % sodium azide and 50 % glycerol.
Preservative:	Sodium azide
Precaution of Use:	This product contains Sodium azide: a POISONOUS AND HAZARDOUS SUBSTANCE which should be handled by trained staff only.
Storage:	-20 °C
Storage Comment:	Store at -20 °C. Stable for 12 months from date of receipt.
Expiry Date:	12 months



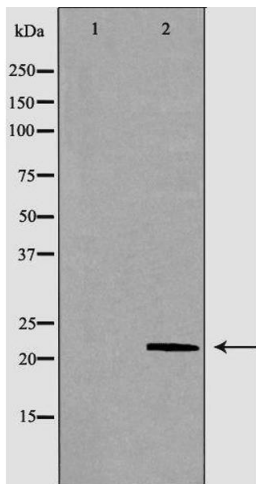
Immunohistochemistry

Image 1. ABIN6276476 at 1/100 staining Human liver cancer tissue by IHC-P. The sample was formaldehyde fixed and a heat mediated antigen retrieval step in citrate buffer was performed. The sample was then blocked and incubated with the antibody for 1.5 hours at 22°C. An HRP conjugated goat anti-rabbit antibody was used as the secondary



Western Blotting

Image 2. Western blot analysis of extracts from mouse lung, mouse brain, rat brain, using RHOC Antibody.



Western Blotting

Image 3. Western blot analysis of A549 using RHOC antibody. The lane on the left is treated with the antigen-specific peptide.