



[Go to Product page](#)

Datasheet for ABIN6264753
anti-RPS2 antibody (C-Term)

3 Images

Overview

Quantity:	100 µL
Target:	RPS2
Binding Specificity:	C-Term
Reactivity:	Human, Rat
Host:	Rabbit
Clonality:	Polyclonal
Conjugate:	This RPS2 antibody is un-conjugated
Application:	Western Blotting (WB), ELISA, Immunohistochemistry (IHC), Immunofluorescence (IF), Immunocytochemistry (ICC)

Product Details

Immunogen:	A synthesized peptide derived from human Ribosomal Protein S2, corresponding to a region within C-terminal amino acids.
Isotype:	IgG
Specificity:	Ribosomal Protein S2 Antibody detects endogenous levels of total Ribosomal Protein S2.
Predicted Reactivity:	Pig,Zebrafish,Bovine,Horse,Sheep,Dog,Chicken,Xenopus
Purification:	The antiserum was purified by peptide affinity chromatography using SulfoLink™ Coupling Resin (Thermo Fisher Scientific).

Target Details

Target:	RPS2
---------	------

Target Details

Alternative Name: [RPS2 \(RPS2 Products\)](#)

Background: Gene: RPS2

Molecular Weight: 31kDa

Gene ID: 6187

UniProt: [P15880](#)

Pathways: [Ribonucleoprotein Complex Subunit Organization, Ribosome Assembly](#)

Application Details

Application Notes: WB 1:1000, IF/ICC 1:100-1:500, IHC 1:50-1:200, ELISA(peptide) 1:20000-1:40000

Restrictions: For Research Use only

Handling

Format: Liquid

Concentration: 1 mg/mL

Buffer: Rabbit IgG in phosphate buffered saline , pH 7.4, 150 mM NaCl, 0.02 % sodium azide and 50 % glycerol.

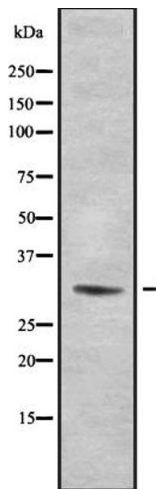
Preservative: Sodium azide

Precaution of Use: This product contains Sodium azide: a POISONOUS AND HAZARDOUS SUBSTANCE which should be handled by trained staff only.

Storage: -20 °C

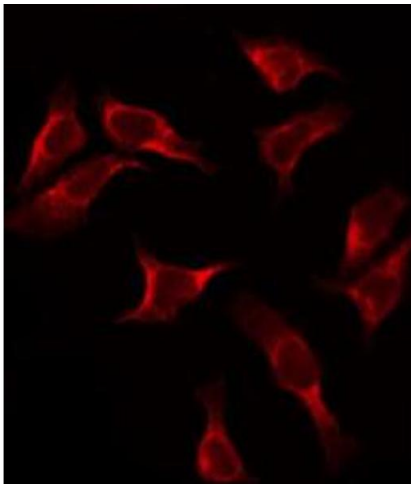
Storage Comment: Store at -20 °C. Stable for 12 months from date of receipt.

Expiry Date: 12 months



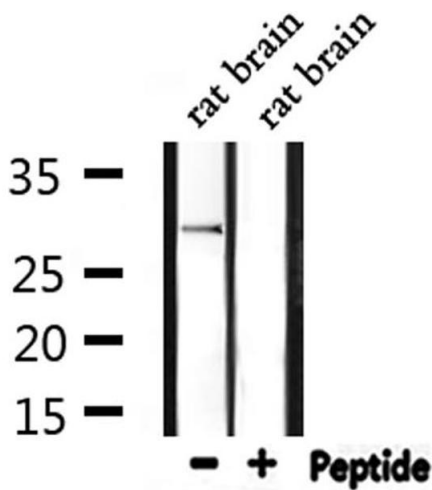
Western Blotting

Image 1. Western blot analysis of Ribosomal Protein S2 using HeLa whole cell lysates



Immunofluorescence (fixed cells)

Image 2. ABIN6272417 staining HeLa by IF/ICC. The sample were fixed with PFA and permeabilized in 0.1% Triton X-100, then blocked in 10% serum for 45 minutes at 25°C. The primary antibody was diluted at 1/200 and incubated with the sample for 1 hour at 37°C. An Alexa Fluor 594 conjugated goat anti-rabbit IgG (H+L) Ab, diluted at 1/600, was used as the secondary antibody.



Western Blotting

Image 3. Western blot analysis of extracts from rat brain, using Ribosomal Protein S2 Antibody.