

Datasheet for ABIN6264754
anti-RIC8B antibody (C-Term)

3 Images

[Go to Product page](#)

Overview

Quantity:	100 µL
Target:	RIC8B
Binding Specificity:	C-Term
Reactivity:	Human, Mouse, Rat
Host:	Rabbit
Clonality:	Polyclonal
Conjugate:	This RIC8B antibody is un-conjugated
Application:	Western Blotting (WB), Immunohistochemistry (IHC), Immunocytochemistry (ICC), Immunofluorescence (IF)

Product Details

Immunogen:	A synthesized peptide derived from human RIC8B, corresponding to a region within C-terminal amino acids.
Isotype:	IgG
Specificity:	RIC8B Antibody detects endogenous levels of total RIC8B.
Predicted Reactivity:	Zebrafish
Purification:	The antiserum was purified by peptide affinity chromatography using SulfoLink™ Coupling Resin (Thermo Fisher Scientific).

Target Details

Target:	RIC8B
---------	-------

Target Details

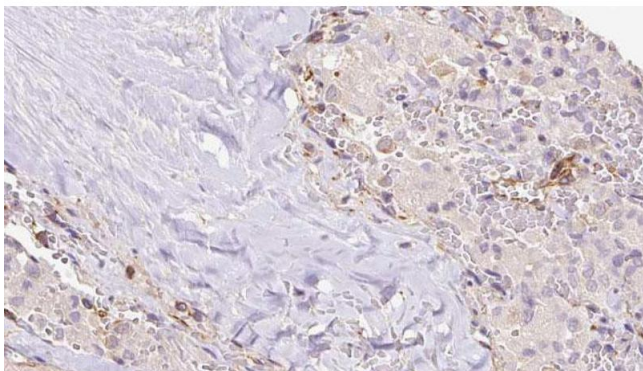
Alternative Name:	RIC8B (RIC8B Products)
Background:	<p>Description: Guanine nucleotide exchange factor (GEF), which can activate some, but not all, G-alpha proteins by exchanging bound GDP for free GTP. Able to potentiate G(olf)-alpha-dependent cAMP accumulation suggesting that it may be an important component for odorant signal transduction.</p> <p>Gene: RIC8B</p>
Molecular Weight:	61-66 kDa
Gene ID:	55188
UniProt:	Q9NVN3
Pathways:	Regulation of G-Protein Coupled Receptor Protein Signaling

Application Details

Application Notes:	WB 1:500-1:2000, IHC 1:50-1:200, IF/ICC 1:100-1:500
Restrictions:	For Research Use only

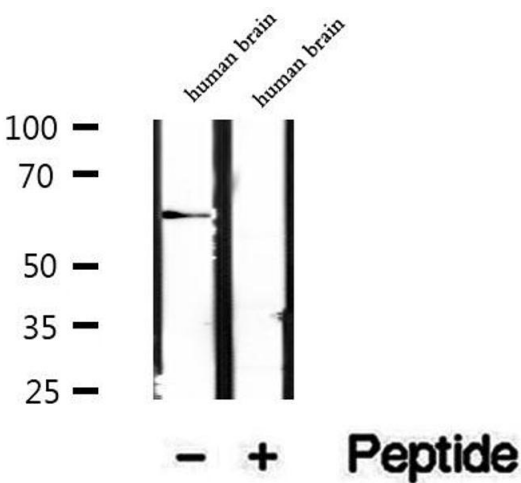
Handling

Format:	Liquid
Concentration:	1 mg/mL
Buffer:	Rabbit IgG in phosphate buffered saline , pH 7.4, 150 mM NaCl, 0.02 % sodium azide and 50 % glycerol.
Preservative:	Sodium azide
Precaution of Use:	This product contains Sodium azide: a POISONOUS AND HAZARDOUS SUBSTANCE which should be handled by trained staff only.
Storage:	-20 °C
Storage Comment:	Store at -20 °C. Stable for 12 months from date of receipt.
Expiry Date:	12 months



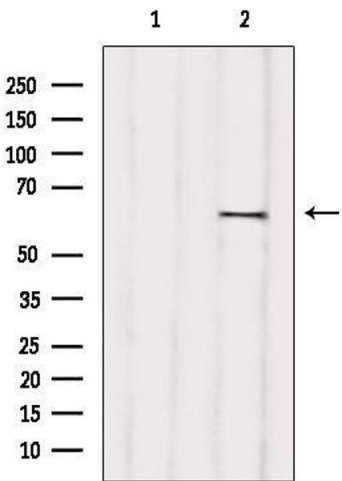
Immunohistochemistry

Image 1. ABIN6273309 at 1/100 staining Human thyroid cancer tissue by IHC-P. The sample was formaldehyde fixed and a heat mediated antigen retrieval step in citrate buffer was performed. The sample was then blocked and incubated with the antibody for 1.5 hours at 22°C. An HRP conjugated goat anti-rabbit antibody was used as the secondary.



Western Blotting

Image 2. Western blot analysis of extracts of human brain tissue, using RIC8B antibody.



Western Blotting

Image 3. Western blot analysis of extracts from various samples, using RIC8B Antibody. Lane 1: Mouse brain treated with blocking peptide; Lane 2: Mouse brain; Lane 3: 293.