



Datasheet for ABIN6264776  
**anti-RNASE12 antibody (Internal Region)**



[Go to Product page](#)

2 Images

Overview

Quantity:	100 µL
Target:	RNASE12
Binding Specificity:	Internal Region
Reactivity:	Human, Mouse, Rat
Host:	Rabbit
Clonality:	Polyclonal
Conjugate:	This RNASE12 antibody is un-conjugated
Application:	Western Blotting (WB), Immunohistochemistry (IHC), ELISA, Immunocytochemistry (ICC), Immunofluorescence (IF)

Product Details

Immunogen:	A synthesized peptide derived from human RNASE12, corresponding to a region within the internal amino acids.
Isotype:	IgG
Specificity:	RNASE12 Antibody detects endogenous levels of total RNASE12.
Predicted Reactivity:	Pig,Horse,Sheep,Dog
Purification:	The antiserum was purified by peptide affinity chromatography using SulfoLink™ Coupling Resin (Thermo Fisher Scientific).

Target Details

Target:	RNASE12
---------	---------

## Target Details

---

Alternative Name:	RNASE12 ( <a href="#">RNASE12 Products</a> )
Background:	Description: Does not exhibit any ribonuclease activity. Gene: RNASE12
Molecular Weight:	17kDa
Gene ID:	493901
UniProt:	<a href="#">Q5GAN4</a>

## Application Details

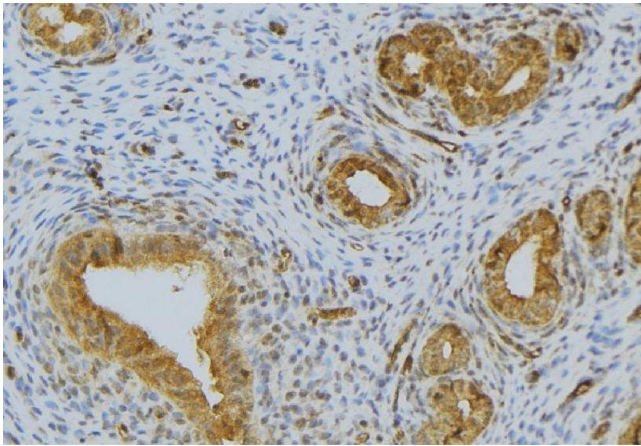
---

Application Notes:	WB 1:500-1:2000, IHC 1:50-1:200, IF/ICC 1:100-1:500, ELISA(peptide) 1:20000-1:40000
Restrictions:	For Research Use only

## Handling

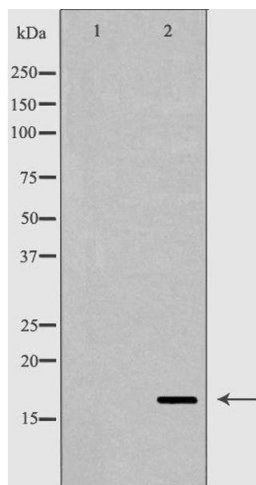
---

Format:	Liquid
Concentration:	1 mg/mL
Buffer:	Rabbit IgG in phosphate buffered saline , pH 7.4, 150 mM NaCl, 0.02 % sodium azide and 50 % glycerol.
Preservative:	Sodium azide
Precaution of Use:	This product contains Sodium azide: a POISONOUS AND HAZARDOUS SUBSTANCE which should be handled by trained staff only.
Storage:	-20 °C
Storage Comment:	Store at -20 °C. Stable for 12 months from date of receipt.
Expiry Date:	12 months



### Immunohistochemistry

**Image 1.** ABIN6276486 at 1/100 staining Human uterus tissue by IHC-P. The sample was formaldehyde fixed and a heat mediated antigen retrieval step in citrate buffer was performed. The sample was then blocked and incubated with the antibody for 1.5 hours at 22°C. An HRP conjugated goat anti-rabbit antibody was used as the secondary



### Western Blotting

**Image 2.** Western blot analysis of skin tissue lysate using RNASE12 antibody. The lane on the left is treated with the antigen-specific peptide.