

Datasheet for ABIN6264783
anti-RNF144A antibody (Internal Region)



[Go to Product page](#)

3 Images

Overview

Quantity:	100 µL
Target:	RNF144A
Binding Specificity:	Internal Region
Reactivity:	Human, Mouse, Rat
Host:	Rabbit
Clonality:	Polyclonal
Conjugate:	This RNF144A antibody is un-conjugated
Application:	Western Blotting (WB), ELISA, Immunohistochemistry (IHC), Immunofluorescence (IF), Immunocytochemistry (ICC)

Product Details

Immunogen:	A synthesized peptide derived from human RNF144A, corresponding to a region within the internal amino acids.
Isotype:	IgG
Specificity:	RNF144A Antibody detects endogenous levels of total RNF144A.
Predicted Reactivity:	Pig,Bovine,Horse,Sheep,Dog,Chicken
Purification:	The antiserum was purified by peptide affinity chromatography using SulfoLink™ Coupling Resin (Thermo Fisher Scientific).

Target Details

Target:	RNF144A
---------	---------

Target Details

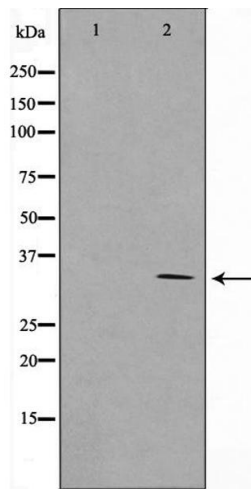
Alternative Name:	RNF144A (RNF144A Products)
Background:	Description: E3 ubiquitin-protein ligase which accepts ubiquitin from E2 ubiquitin-conjugating enzymes UBE2L3 and UBE2L6 in the form of a thioester and then directly transfers the ubiquitin to targeted substrates. Mediates the ubiquitination and degradation of the DNA damage kinase PRKDC. Gene: RNF144A
Molecular Weight:	30kDa
Gene ID:	9781
UniProt:	P50876

Application Details

Application Notes:	WB 1:500-1:2000, IF/ICC 1:100-1:500, IHC 1:50-1:200, ELISA(peptide) 1:20000-1:40000
Restrictions:	For Research Use only

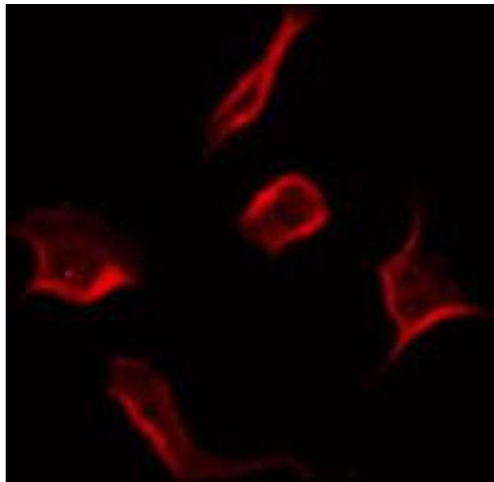
Handling

Format:	Liquid
Concentration:	1 mg/mL
Buffer:	Rabbit IgG in phosphate buffered saline , pH 7.4, 150 mM NaCl, 0.02 % sodium azide and 50 % glycerol.
Preservative:	Sodium azide
Precaution of Use:	This product contains Sodium azide: a POISONOUS AND HAZARDOUS SUBSTANCE which should be handled by trained staff only.
Storage:	-20 °C
Storage Comment:	Store at -20 °C. Stable for 12 months from date of receipt.
Expiry Date:	12 months



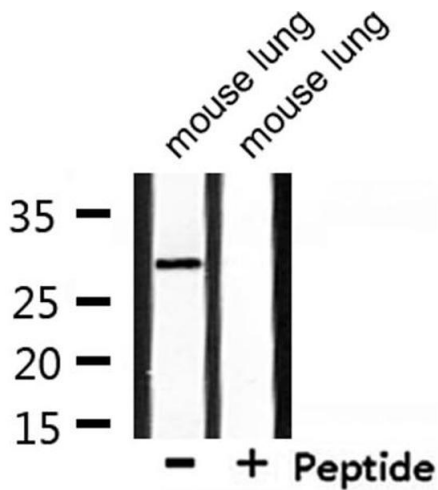
Western Blotting

Image 1. Western blot analysis on COLO205 cell lysate using RNF144A Antibody, *The lane on the left is treated with the antigen-specific peptide.*



Immunofluorescence (fixed cells)

Image 2. ABIN6266934 staining COLO205 by IF/ICC. The sample were fixed with PFA and permeabilized in 0.1% Triton X-100, then blocked in 10% serum for 45 minutes at 25°C. The primary antibody was diluted at 1/200 and incubated with the sample for 1 hour at 37°C. An Alexa Fluor 594 conjugated goat anti-rabbit IgG (H+L) Ab, diluted at 1/600, was used as the secondary antibody.



Western Blotting

Image 3. Western blot analysis of extracts from mouse lung, using RNF144A Antibody.