

Datasheet for ABIN6264785  
**anti-RNF167 antibody (Internal Region)**



[Go to Product page](#)

2 Images

## Overview

Quantity:	100 µL
Target:	RNF167
Binding Specificity:	Internal Region
Reactivity:	Human, Mouse, Rat
Host:	Rabbit
Clonality:	Polyclonal
Conjugate:	This RNF167 antibody is un-conjugated
Application:	Western Blotting (WB), ELISA, Immunohistochemistry (IHC)

## Product Details

Immunogen:	A synthesized peptide derived from human RNF167, corresponding to a region within the internal amino acids.
Isotype:	IgG
Specificity:	RNF167 Antibody detects endogenous levels of total RNF167.
Predicted Reactivity:	Rabbit
Purification:	The antiserum was purified by peptide affinity chromatography using SulfoLink™ Coupling Resin (Thermo Fisher Scientific).

## Target Details

Target:	RNF167
---------	--------

## Target Details

---

Alternative Name: RNF167 ([RNF167 Products](#))

---

Background: Description: May act as an E3 ubiquitin-protein ligase, or as part of the E3 complex, which accepts ubiquitin from specific E2 ubiquitin-conjugating enzymes, such as UBE2E1, and then transfers it to substrates, such as SLC22A18. May play a role in growth regulation involved in G1/S transition.

Gene: RNF167

---

Molecular Weight: 38 kDa

---

Gene ID: 26001

---

UniProt: [Q9H6Y7](#)

---

## Application Details

---

Application Notes: WB 1:1000-3000, IHC 1:50-1:200, ELISA(peptide) 1:20000-1:40000

---

Restrictions: For Research Use only

---

## Handling

---

Format: Liquid

---

Concentration: 1 mg/mL

---

Buffer: Rabbit IgG in phosphate buffered saline , pH 7.4, 150 mM NaCl, 0.02 % sodium azide and 50 % glycerol.

---

Preservative: Sodium azide

---

Precaution of Use: This product contains Sodium azide: a POISONOUS AND HAZARDOUS SUBSTANCE which should be handled by trained staff only.

---

Storage: -20 °C

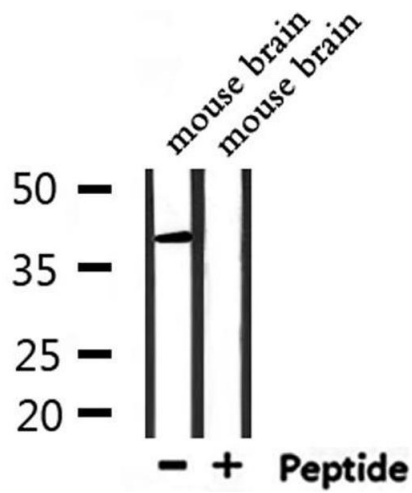
---

Storage Comment: Store at -20 °C. Stable for 12 months from date of receipt.

---

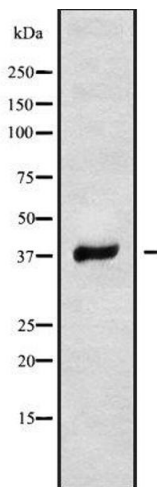
Expiry Date: 12 months

---



### Western Blotting

**Image 1.** Western blot analysis of extracts from mouse brain, using RNF167 Antibody.



### Western Blotting

**Image 2.** Western blot analysis of RNF167 using MCF7 whole cell lysates