

Datasheet for ABIN6264812  
**anti-POLR2F antibody (N-Term)**[Go to Product page](#)

## 3 Images

## Overview

Quantity:	100 µL
Target:	POLR2F
Binding Specificity:	N-Term
Reactivity:	Human, Rat, Mouse
Host:	Rabbit
Clonality:	Polyclonal
Conjugate:	This POLR2F antibody is un-conjugated
Application:	Western Blotting (WB), Immunohistochemistry (IHC), ELISA

## Product Details

Immunogen:	A synthesized peptide derived from human RPAB2, corresponding to a region within N-terminal amino acids.
Isotype:	IgG
Specificity:	RPAB2 Antibody detects endogenous levels of total RPAB2.
Predicted Reactivity:	Pig,Bovine,Horse,Sheep,Rabbit,Dog,Xenopus
Purification:	The antiserum was purified by peptide affinity chromatography using SulfoLink™ Coupling Resin (Thermo Fisher Scientific).

## Target Details

Target:	POLR2F
---------	--------

## Target Details

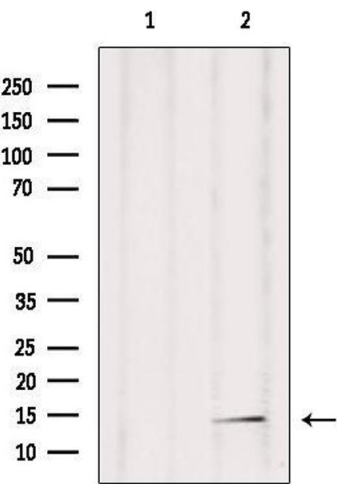
Alternative Name:	POLR2F ( <a href="#">POLR2F Products</a> )
Background:	<p>Description: DNA-dependent RNA polymerases catalyze the transcription of DNA into RNA using the four ribonucleoside triphosphates as substrates. Common component of RNA polymerases I, II, and III which synthesize ribosomal RNA precursors, mRNA precursors and many functional non-coding RNAs, and small RNAs, such as 5S rRNA and tRNAs, respectively. Pol II is the central component of the basal RNA polymerase II transcription machinery. Pols are composed of mobile elements that move relative to each other. In Pol II, POLR2F/RPB6 is part of the clamp element and together with parts of RPB1 and RPB2 forms a pocket to which the RPB4-RPB7 subcomplex binds (By similarity).</p> <p>Gene: POLR2F</p>
Molecular Weight:	14 kDa
Gene ID:	5435
UniProt:	<a href="#">P61218</a>
Pathways:	<a href="#">Regulatory RNA Pathways</a>

## Application Details

Application Notes:	WB 1:1000-3000, IHC 1:200, ELISA(peptide) 1:20000-1:40000
Restrictions:	For Research Use only

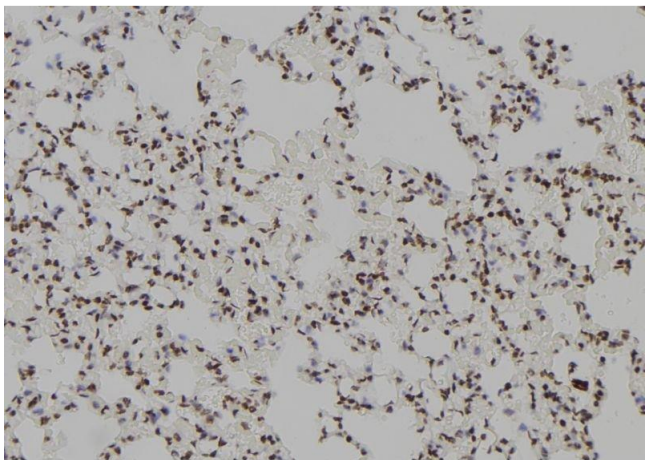
## Handling

Format:	Liquid
Concentration:	1 mg/mL
Buffer:	Rabbit IgG in phosphate buffered saline , pH 7.4, 150 mM NaCl, 0.02 % sodium azide and 50 % glycerol.
Preservative:	Sodium azide
Precaution of Use:	This product contains Sodium azide: a POISONOUS AND HAZARDOUS SUBSTANCE which should be handled by trained staff only.
Storage:	-20 °C
Storage Comment:	Store at -20 °C. Stable for 12 months from date of receipt.
Expiry Date:	12 months



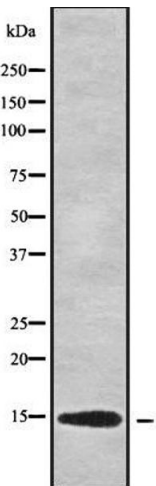
### Western Blotting

**Image 1.** Western blot analysis of extracts from mouse brain, using RPAB2 Antibody. Lane 1 was treated with the blocking peptide.



### Immunohistochemistry

**Image 2.** ABIN6279377 at 1/100 staining Rat lung tissue by IHC-P. The sample was formaldehyde fixed and a heat mediated antigen retrieval step in citrate buffer was performed. The sample was then blocked and incubated with the antibody for 1.5 hours at 22°C. An HRP conjugated goat anti-rabbit antibody was used as the secondary



### Western Blotting

**Image 3.** Western blot analysis of RPAB2 using HeLa whole cell lysates