



Datasheet for ABIN6264830  
**anti-RPL22/L1 antibody**



[Go to Product page](#)

2 Images

Overview

Quantity:	100 µL
Target:	RPL22/L1 (RPL22L1)
Reactivity:	Human, Mouse, Rat
Host:	Rabbit
Clonality:	Polyclonal
Conjugate:	This RPL22/L1 antibody is un-conjugated
Application:	ELISA, Immunohistochemistry (IHC), Western Blotting (WB)

Product Details

Immunogen:	A synthesized peptide derived from human RPL22/L1
Isotype:	IgG
Specificity:	RPL22/L1 Antibody detects endogenous levels of total RPL22/L1
Cross-Reactivity:	Human, Mouse (Murine), Rat (Rattus)
Purification:	The antiserum was purified by peptide affinity chromatography using SulfoLink™ Coupling Resin (Thermo Fisher Scientific).

Target Details

Target:	RPL22/L1 (RPL22L1)
Alternative Name:	RPL22/L1 ( <a href="#">RPL22L1 Products</a> )
Background:	Gene: RPL22L1

## Target Details

Molecular Weight:	15 kDa
Gene ID:	200916
UniProt:	<a href="#">Q6P5R6</a> , <a href="#">P35268</a>

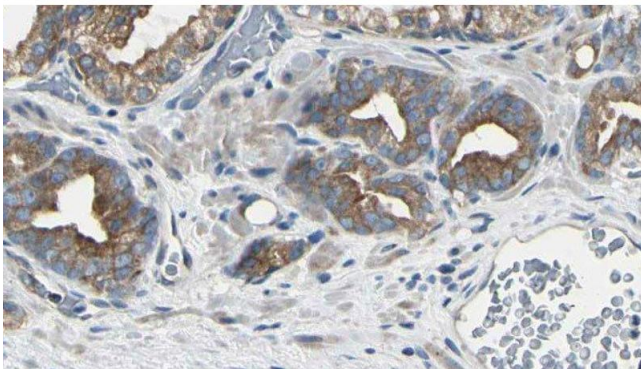
## Application Details

Application Notes:	WB 1:1000-3000 IHC 1:200
Restrictions:	For Research Use only

## Handling

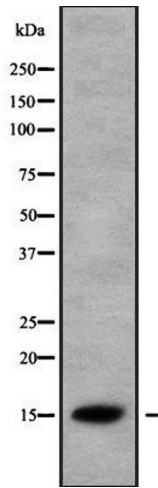
Format:	Liquid
Concentration:	1 mg/mL
Buffer:	Rabbit IgG in phosphate buffered saline , pH 7.4, 150 mM NaCl, 0.02 % sodium azide and 50 % glycerol.
Preservative:	Sodium azide
Precaution of Use:	This product contains Sodium azide: a POISONOUS AND HAZARDOUS SUBSTANCE which should be handled by trained staff only.
Storage:	-20 °C
Storage Comment:	Store at -20 °C.Stable for 12 months from date of receipt
Expiry Date:	12 months

## Images



### Immunohistochemistry

**Image 1.** ABIN6279781 at 1/100 staining Human prostate tissue by IHC-P. The sample was formaldehyde fixed and a heat mediated antigen retrieval step in citrate buffer was performed. The sample was then blocked and incubated with the antibody for 1.5 hours at 22;ãC. An HRP conjugated goat anti-rabbit antibody was used as the secondary



### Western Blotting

**Image 2.** Western blot analysis of RPL22/L1 using K562 whole cell lysates