



[Go to Product page](#)

Datasheet for ABIN6264832  
**anti-RPL27 antibody (Internal Region)**

1 Image

Overview

Quantity:	100 µL
Target:	RPL27
Binding Specificity:	Internal Region
Reactivity:	Human, Mouse, Rat
Host:	Rabbit
Clonality:	Polyclonal
Conjugate:	This RPL27 antibody is un-conjugated
Application:	Western Blotting (WB), ELISA, Immunofluorescence (IF), Immunocytochemistry (ICC)

Product Details

Immunogen:	A synthesized peptide derived from human RPL27, corresponding to a region within the internal amino acids.
Isotype:	IgG
Specificity:	RPL27 Antibody detects endogenous levels of total RPL27.
Predicted Reactivity:	Pig,Zebrafish,Bovine,Horse,Sheep,Dog,Chicken,Xenopus
Purification:	The antiserum was purified by peptide affinity chromatography using SulfoLink™ Coupling Resin (Thermo Fisher Scientific).

Target Details

Target:	RPL27
---------	-------

## Target Details

---

Alternative Name:	RPL27 ( <a href="#">RPL27 Products</a> )
Background:	Description: Component of the large ribosomal subunit (PubMed:12962325, PubMed:23636399, PubMed:25957688, PubMed:25901680). Required for proper rRNA processing and maturation of 28S and 5.8S rRNAs (PubMed:25424902). Gene: RPL27
Molecular Weight:	16 kDa
Gene ID:	6155
UniProt:	<a href="#">P61353</a>

## Application Details

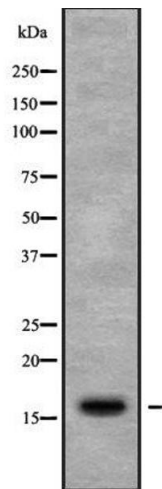
---

Application Notes:	WB 1:1000-3000, IF/ICC 1:100-1:500, ELISA(peptide) 1:20000-1:40000
Restrictions:	For Research Use only

## Handling

---

Format:	Liquid
Concentration:	1 mg/mL
Buffer:	Rabbit IgG in phosphate buffered saline , pH 7.4, 150 mM NaCl, 0.02 % sodium azide and 50 % glycerol.
Preservative:	Sodium azide
Precaution of Use:	This product contains Sodium azide: a POISONOUS AND HAZARDOUS SUBSTANCE which should be handled by trained staff only.
Storage:	-20 °C
Storage Comment:	Store at -20 °C. Stable for 12 months from date of receipt.
Expiry Date:	12 months



### Western Blotting

**Image 1.** Western blot analysis of RPL27 using COLO205 whole cell lysates